

HBE8L2W2-A

8MP 4-in-1 Bullet Camera



System Overview

Experience 4K video surveillance with the simplicity of reusing existing coaxial infrastructure. The 4K HDCVI camera adopts a powerful ISP and advanced 1/2.7" CMOS sensor, which provides superior high quality images. In addition, the camera features broadcast-quality audio to provide enhanced supplementary evidence collection. Ultra-high definition and a complete set of features makes the 4K HDCVI camera an ideal choice for mid to large-size businesses and projects where both highly reliable surveillance and construction flexibility are demanded.

Features

HD-over-Coax

HD-over-Coax is a new analog high definition (HD) video standard transmitting over coaxial cable. The technology provides transmission of HD video as well as audio, and two-way control data over long distances. You can implement an HD system using the same coax cables that your existing analog system is running on. HD-over-Coax installs just like analog cameras and gives you up to 1080p High Definition. No fiber, no configuring, and no special training required.

Long Distance Transmission

HDCVI technology guarantees real-time transmission at long distance without any loss. It supports up to 700m transmission for 4K and 4MP HD video via coaxial cable, and up to 300m via UTP cable.

Broadcast-quality Audio

Audio information can be a big part of evidence in video surveillance applications. This HDCVI camera supports audio signal transmissions over the coaxial cable. Self-adaptive support for normal coaxial audio and broadcast-quality audio not only simplifies operation, but also results in better audio quality and reduced noise interference.

Multiple-formats

4-in-1 Security cameras have replaced older analog only surveillance cameras also known as 960H cameras or CCTV cameras. 4-in-1 Security cameras are considered "universal cameras" because they can output three types of HD over Coax video signals (HD-CVI, HD-TVI, AHD) and analog resolution video (CVBS). The ability to easily switch video output from the cameras' BNC connector makes them compatible with all the popular security DVRs.

- 120dB True WDR, 3DNR
- Max. 4K resolution
- CVI/CVBS/AHD/TVI switchable
- Built-in mic
- 2.8mm Fixed lens
- Max. IR length 30m, Smart IR
- IP67, 12V±30%DC



Wide Dynamic Range (WDR)

When part of an image is extremely dark but another part is so bright you can't see any details, that's dynamic range—the difference in lighting. Cameras with wide dynamic range (WDR) have special software that allows them to balance that lighting for one clear image. This makes them ideal for recording areas like store entrances where the contrast between the sunshine outside and the dim lighting inside can be extremely difficult to record.

Advanced 3DNR

Have you ever taken a picture or video outside in the dark (without flash)? You've probably noticed that it can sometimes turn out to be very grainy. In technical terms, this is called noise. Noise is any unwanted interference in the signal. The latest form of Digital Noise Reduction is 3D-DNR. It compares every pixel with the pixels surrounding it in addition to every frame with the next. With 3D-DNR, a thorough processing of the image is applied, including the background. This results in a clearer image than traditional DNR and less space is taken on the hard disk drive.

Protection

The camera's outstanding reliability is unsurpassed due to its rugged design. This camera is protected against water and dust with an IP67 ranking, making it suitable for indoor or outdoor environments. Supporting ±30% input voltage tolerance, this camera suits even the most unstable power supply conditions. Its 4KV lightning rating provides protection for the camera and its structure against the effects of lightning.

Technical Specification

Camera	
Image Sensor	1/2.7 inch CMOS
Effective Pixels	3840 (H)×2160 (V), 4K
Electronic Shutter Speed	PAL: 1/3s-1/100000s NTSC: 1/4s-1/100000s
Minimum Illumination	0.03Lux/F2.0, 30IRE, 0Lux IR on
IR Distance	Distance up to 30m (98.43ft)
IR On/Off Control	Auto/Manual
IR LEDs	1
Pan/Tilt/Rotation Range	Pan: 0°~360° Tilt: 0°~180° Rotation: 0°~360°

Lens					
Lens Type		Fixed-focal			
Mount Type		M12			
Focal Length		2.8mm			
Max. Aperture		F2.0			
Angle of View		125°×105°×56° (diagonal×horizontal×vertical)			
Iris type		Fixed Iris			
Close Focus Distance		1m/1.8m/3.6m (3.28ft/5.91ft/11.81ft)			
DORI Distance	Lens	Detect	Observe	Recognize	Identify
	2.8mm	75m(246ft)	30m(98ft)	15m(49ft)	8m(26ft)

Video	
Video Frame Rate	CVI: 4K@15fps; 5M@20fps; 4M@25fps/30fps CVBS: PAL/NTSC AHD: 4K@15fps; 5M@20fps; 4M@25fps/30fps TVI: 4K@15fps; 5M@20fps; 4M@25fps/30fps
Resolution	4K (3840×2160); 5M (2592×1944); 4M (2560×1440); 960H (960× 576/960×480)
Day/Night	Auto switch by ICR
BLC	BLC/HLC/WDR
WDR	120dB/WDR
White Balance	Auto; manual
Gain Control	Auto; manual
Noise Reduction	2D&3D NR
Smart IR	Yes
Electronic Defog	Yes
Digital Zoom	4X
Mirror	Off/On
Privacy Masking	Off/On (8 Area, Rectangle)

Certifications	CE (EN55032, EN55024, EN50130-4) FCC (CFR 47 FCC Part 15 subpartB, ANSI C63.4-2014) UL (UL60950-1+CAN/CSA C22.2 No.60950-1)
----------------	---

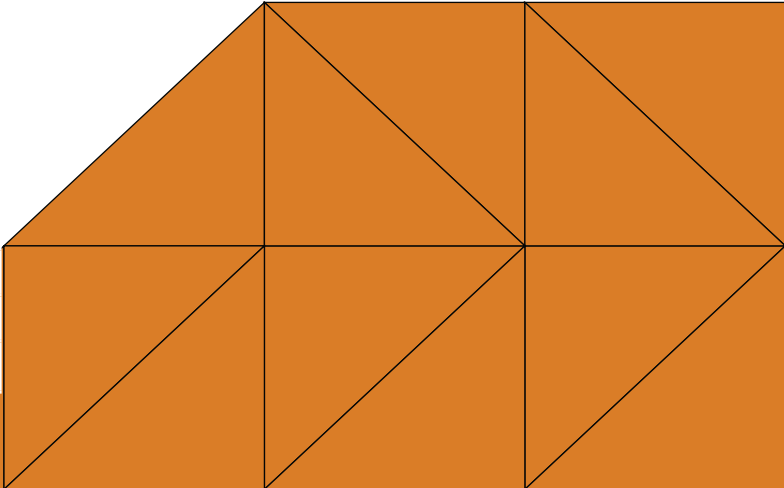
Interface	
Audio Interface	Built-in Mic (-A)

Port	
Video Port	Video output choices of CVI/TVI/AHD/CVBS by one BNC port

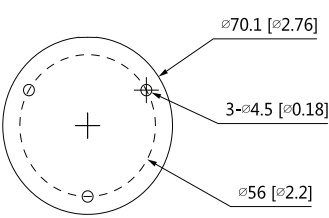
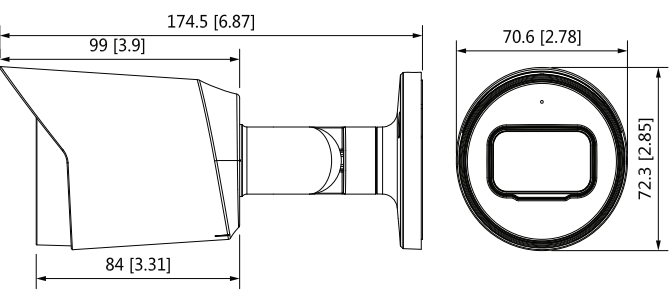
Power	
Power Supply	12V±30% DC
Power Consumption	Max 5.2W (12V DC, IR on)

Environment	
Operating Temperature	-40°C to +60°C (-40°F to 140°F); <95% (non-condensation)
Storage Temperature	-40°C to +60°C (-40°F to 140°F); <95% (non-condensation)
Protection Grade	IP67

Structure	
Casing	Metal throughout the whole casing
Dimensions	174.5mm×70.6mm×72.3mm (6.87"×2.78"×2.85")
Net Weight	350g (0.77lb)
Gross Weight	450g (0.99lb)

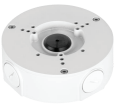


Dimensions (mm/inch)



Accessories

Optional:



JBEW-130
Junction Box



LEW-152-E
Pole Mount

Junction Mount	Wall Mount	Pole Mount
JBEW-130	—	JBEW-130 + LEW-152E