

# HDE8L2W2-A

## 8MP 4-in-1 Turret Dome Camera



### System Overview

This small turret style dome camera gives you 8MP (4K) resolution at 15fps. With Wide Dynamic Range and Smart IR, you'll receive a clear and even image regardless of the lighting conditions. Obtain audio from the surrounding area with its built-in microphone. Due to its IP67 & 4KV ratings, you can mount it in or outdoors, protecting the camera from not only the elements but electrical damage as well.

- 120dB True WDR, 3DNR
- Max. 4K resolution
- CVI/CVBS/AHD/TVI switchable
- Built-in mic
- Fixed 2.8mm Lens
- Max. IR length 30m, Smart IR
- IP67, 12V±30%DC

### Features

#### HD-over-Coax

HD-over-Coax is a new analog high definition (HD) video standard transmitting over coaxial cable. The technology provides transmission of HD video as well as audio, and two-way control data over long distances. You can implement an HD system using the same coax cables that your existing analog system is running on. HD-over-Coax installs just like analog cameras and gives you up to 1080p High Definition. No fiber, no configuring, and no special training required.

#### Long Distance Transmission

HDCVI technology guarantees real-time transmission at long distance without any video quality loss. It supports up to 700m transmission for 4K and 4MP HD video via coaxial cable, and up to 300m via UTP cable.

#### Broadcast-quality Audio

Audio information can be a big part of evidence in video surveillance applications. This HDCVI camera supports audio signal transmissions over the coaxial cable. Self-adaptive support for normal coaxial audio and broadcast-quality audio not only simplifies operation, but also results in better audio quality and reduced noise interference.

#### Multi-formats

4-in-1 Security cameras have replaced older analog only surveillance cameras also known as 960H cameras or CCTV cameras. 4-in-1 Security cameras are considered "universal cameras" because they can output three types of HD over Coax video signals (HD-CVI, HD-TVI, AHD) and analog resolution video (CVBS). The ability to easily switch video output from the cameras' BNC connector makes them compatible with all the popular security DVRs.



#### WDR (Wide Dynamic Range)

When part of an image is extremely dark but another part is so bright you can't see any details, that's dynamic range—the difference in lighting. Cameras with wide dynamic range (WDR) have special software that allows them to balance that lighting for one clear image. This makes them ideal for recording areas like store entrances where the contrast between the sunshine outside and the dim lighting inside can be extremely difficult to record.

#### Advanced 3DNR

Have you ever taken a picture or video outside in the dark (without flash)? You've probably noticed that it can sometimes turn out to be very grainy. In technical terms, this is called noise. Noise is any unwanted interference in the signal. The latest form of Digital Noise Reduction is 3D-DNR. It compares every pixel with the pixels surrounding it in addition to every frame with the next. With 3D-DNR, a thorough processing of the image is applied, including the background. This results in a clearer image than traditional DNR and less space is taken on the hard disk drive.

#### Protection

This camera's outstanding reliability is unsurpassed due to its rugged design. The camera is protected against water and dust with IP67 ranking, making it suitable for indoor or outdoor environments. Supporting ±30% input voltage tolerance, this camera suits even the most unstable power supply conditions. Its 4KV lightning rating provides protection for the camera and its structure against the effects of lightning.

## Technical Specifications

Camera	
Image Sensor	1/2.7 inch CMOS
Effective Pixels	3840 (H)×2160 (V), 4K
Electronic Shutter Speed	PAL: 1/3s-1/100000s NTSC: 1/4s-1/100000s
Minimum Illumination	0.03Lux/F2.0, 30IRE, 0Lux IR on
IR Distance	Distance up to 30m (98.43ft)
IR On/Off Control	Auto/Manual
IR LEDs	1
Pan/Tilt/Rotation Range	Pan: 0°-360° Tilt: 0°-78° Rotation: 0°-360°

Lens						
Lens Type		Fixed-focal				
Mount Type		M12				
Focal Length		2.8mm				
Max. Aperture		F2.0				
Angle of View		125°×105°×56° (diagonal×horizontal×vertical)				
Iris type		Fixed Iris				
Close Focus Distance		1m/1.8m (3.28ft/5.91ft)				
DORI Distance	Lens	Detect	Observe	Recognize	Identify	
	2.8mm	75m (246ft)	30m (98ft)	15m (49ft)	8m (26ft)	

Video	
Video Frame Rate	CVI: 4K@15fps; 5M@20fps; 4M@25fps/30fps CVBS: PAL/NTSC AHD: 4K@15fps; 5M@20fps; 4M@25fps/30fps TVI: 4K@15fps; 5M@20fps; 4M@25fps/30fps
Resolution	4K (3840×2160); 5M (2592×1944); 4M (2560×1440); 960H (960× 576/960×480)
Day/Night	Auto switch by ICR
BLC	BLC/HLC/WDR
WDR	120dB/WDR
White Balance	Auto; manual
Gain Control	Auto; manual
Noise Reduction	2D&3D NR
Smart IR	Yes
Electronic Defog	Yes
Digital Zoom	4X
Mirror	Off/On
Privacy Masking	Off/On (8 Area, Rectangle)

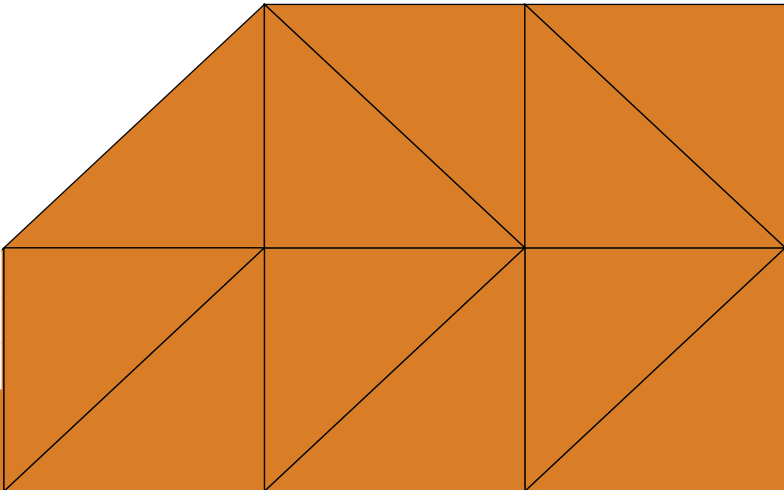
Certifications	CE (EN55032, EN55024, EN50130-4) FCC (CFR 47 FCC Part 15 subpartB, ANSI C63.4-2014) UL (UL60950-1+CAN/CSA C22.2 No.60950-1)
----------------	---

Port	
Video Port	Video output choices of CVI/TVI/AHD/CVBS by one BNC port
Audio Port	Built-in mic

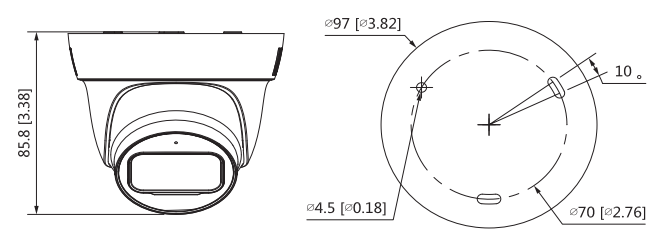
Power	
Power Supply	12V±30% DC
Power Consumption	Max 5.2W (12V DC, IR on)

Environment	
Operating Temperature	-40°C to +60°C (-40°F to 140°F); <95% (non-condensation)
Storage Temperature	-40°C to +60°C (-40°F to 140°F); <95% (non-condensation)
Protection Grade	IP67

Structure	
Casing	Metal inner core+plastic cover
Dimensions	φ97mm×85.8mm (3.82″×3.38″)
Net Weight	300g (0.66lb)
Gross Weight	380g (0.84lb)

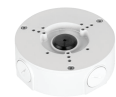


Dimensions (mm/inch)



Accessories

Optional:



JBEW-130  
Junction Box



LEW-152E  
Pole Mount

Junction Box	Pole Mount
JBEW-130	JBEW-130 + LEW-152E