

**5 Megapixel**

# **NETWORK CAMERA**

User Manual

Please read this instruction carefully before operating the unit and keep it for further reference

- This product is intended to be supplied by a Listed Power Unit, marked with 'Limited Power Source', 'LPS' on unit, output rated minimum 12V/2 A or POE 48V/ 350mA or AC24V (depending on models), no more than 2000m altitude of operation and Tma=60 Deg.C.
- As for the modes with PoE function, the function of the ITE being investigated to IEC 60950-1 standard is considered not likely to require connection to an Ethernet network with outside plant routing, including campus environment and the ITE is to be connected only to PoE networks without routing to the outside plant.
- Do not attempt to disassemble the camera; in order to prevent electric shock, do not remove screws or covers.
- There are no user-serviceable parts inside. Please contact the nearest service center as soon as possible if there is any failure.
- Avoid from incorrect operation, shock vibration, heavy pressing which can cause damage to product.
- Do not use corrosive detergent to clean main body of the camera. If necessary, please use soft dry cloth to wipe dirt; for hard contamination, use neutral detergent. Any cleanser for high grade furniture is applicable.
- Avoid aiming the camera directly towards extremely bright objects, such as, sun, as this may damage the image sensor.
- Please follow the instructions to install the camera. Do not reverse the camera, or the reversing image will be received.
- Do not operate it in case temperature, humidity and power supply are beyond the limited stipulations.
- Keep away from heat sources such as radiators, heat registers, stove, etc.
- Do not expose the product to the direct airflow from an air conditioner.
- This manual is for using and managing the product. We may reserve the rights of amending the typographical errors, inconsistencies with the latest version, software upgrades and product improvements, interpretation and modification. These changes will be published in the latest version without special notification.
- All pictures, charts, images in this manual are only for description and explanation of our products. In this manual, the trademarks, product names, service names, company names, products that are not owned by our company are the properties of their respective owners.

# Disclaimer

- With regard to the product with internet access, the use of product shall be wholly at your own risks. Our company shall be irresponsible for abnormal operation, privacy leakage or other damages resulting from cyber attack, hacker attack, virus inspection, or other internet security risks; however, Our company will provide timely technical support if necessary.
- Surveillance laws vary from country to country. Check all laws in your local region before using this product for surveillance purposes. We shall not take the responsibility for any consequences resulting from illegal operations.

# Cybersecurity Recommendations

- Use a strong password. At least 8 characters or a combination of characters, numbers, and upper and lower case letters should be used in your password.
- Regularly change the passwords of your devices to ensure that only authorized users can access the system (recommended time is 90 days).
- It is recommended to change the service default ports (like HTTP-80, HTTPS-443, etc.) to reduce the risk of outsiders being able to access.
- It is recommended to set the firewall of your router. But note that some important ports cannot be closed (like HTTP port, HTTPS port, Data Port).
- It is not recommended to expose the device to the public network. When it is necessary to be exposed to the public network, please set the external hardware firewall and the corresponding firewall policy.
- It is not recommended to use the v1 and v2 functions of SNMP.
- In order to enhance the security of WEB client access, please create a TLS certificate to enable HTTPS.
- Use black and white list to filter the IP address. This will prevent everyone, except those specified IP addresses from accessing the system.
- If you add multiple users, please limit functions of guest accounts.
- If you enable UPnP, it will automatically try to forward ports in your router or modem. It is really very convenient for users, but this will increase the risk of data leakage when the system automatically forwards ports. Disabling UPnP is recommended when the function is not used in real applications.
- Check the log. If you want to know whether your device has been accessed by unauthorized users or not, you can check the log. The system log will show you which IP addresses were used to log in your system and what was accessed.

# Regulatory Information

## FCC Information


### 1. FCC compliance

The products have been tested and found in compliance with the council FCC rules and regulations part 15 subpart B. These limits are designed to provide reasonable protection against harmful interference. This equipment generates uses and can radiate radio frequency energy and, if not installed and used in accordance with the instruction manual, may cause harmful interference to radio communication. However, there is no guarantee that interference will not occur in a particular installation. The user will be required to correct the interface at his own expense in case the harmful interference occurs.

### 2. FCC conditions:

Operation of this product is subject the following two conditions: (1) this device may not cause harmful interface, and (2) this device must accept any interference received, including interference that may cause undesired operation.

## CE Information

 The products have been manufactured to comply with the following directives.  
EMC Directive 2014/30/EU

## RoHS

The products have been designed and manufactured in accordance with Directive EU RoHS Directive 2011/65/EU and its amendment Directive EU 2015/863 on the restriction of the use of certain hazardous substances in electrical and electronic equipment.



2012/19/EU (WEEE directive): The Directive on waste electrical and electronic equipment (WEEE Directive). To improve the environmental management of WEEE, the improvement of collection, treatment and recycling of electronics at the end of their life is essential. Therefore, the product marked with this symbol must be disposed of in a responsible manner.

Directive 94/62/EC: The Directive aims at the management of packaging and packaging waste and environmental protection. The packaging and packaging waste of the product in this manual refers to must be disposed of at designated collection points for proper recycling and environmental protection.

REACH(EC1907/2006): REACH concerns the Registration, Evaluation, Authorization and Restriction of Chemicals, which aims to ensure a high level of protection of human health and the environment through better and earlier identification of the intrinsic properties of chemical substances. The product in this manual refers to conforms to the rules and regulations of REACH. For more information of REACH, please refer to DG GROWTH or ECHA websites.



# Table of Contents

<b>1</b>	<b>Introduction .....</b>	<b>1</b>
<b>2</b>	<b>Network Connection.....</b>	<b>2</b>
2.1	LAN.....	2
2.1.1	Access through IP-Tool .....	2
2.1.2	Directly Access through IE.....	4
2.2	WAN.....	5
<b>3</b>	<b>Live View .....</b>	<b>8</b>
<b>4</b>	<b>Network Camera Configuration.....</b>	<b>10</b>
4.1	System Configuration.....	10
4.1.1	Basic Information .....	10
4.1.2	Date and Time .....	10
4.1.3	Local Config.....	11
4.1.4	Storage.....	11
4.2	Image Configuration .....	14
4.2.1	Display Configuration .....	14
4.2.2	Video / Audio Configuration .....	16
4.2.3	OSD Configuration.....	17
4.2.4	Video Mask .....	18
4.2.5	ROI Configuration.....	19
4.3	Alarm Configuration.....	20
4.3.1	Motion Detection.....	20
4.3.2	Other Alarms .....	21
4.3.3	Alarm Server .....	22
4.4	Event Configuration.....	22
4.4.1	Exception.....	22
4.4.2	Line Crossing .....	24
4.4.3	Intrusion .....	26
4.4.4	Target Counting.....	27
4.4.5	Face Detection.....	28
4.5	Network Configuration .....	31
4.5.1	TCP/IP.....	31
4.5.2	Port.....	32
4.5.3	Server Configuration .....	33
4.5.4	DDNS.....	33
4.5.5	SNMP .....	34
4.5.6	802.1x.....	34
4.5.7	RTSP .....	35
4.5.8	UPNP .....	36
4.5.9	Email .....	36
4.5.10	FTP .....	37

4.5.11	HTTPS.....	38
4.5.12	QoS.....	39
4.6	Security Configuration.....	40
4.6.1	User Configuration.....	40
4.6.2	Online User.....	41
4.6.3	Block and Allow Lists.....	42
4.6.4	Security Management.....	42
4.7	Maintenance Configuration.....	43
4.7.1	Backup and Restore.....	43
4.7.2	Reboot.....	44
4.7.3	Upgrade.....	44
4.7.4	Operation Log.....	44
<b>5</b>	<b>Search .....</b>	<b>45</b>
5.1	Image Search.....	45
5.2	Video Search.....	47
5.2.1	Local Video Search.....	47
5.2.2	SD Card Video Search.....	48
<b>Appendix.....</b>		<b>51</b>
<b>Appendix 1 Troubleshooting .....</b>		<b>51</b>
<b>Appendix 2 Specifications .....</b>		<b>53</b>

# 1 Introduction

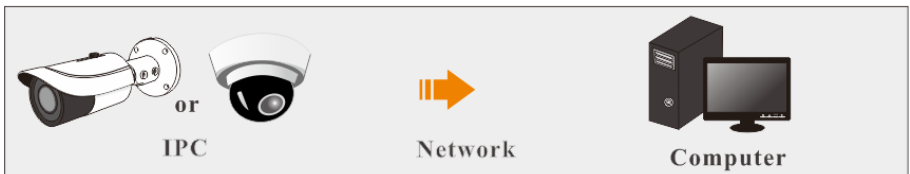
This IP-CAMERA (short for IP-CAM) is designed for high performance CCTV solutions. It adopts state of the art video processing chips, integrated with the most advanced technologies (like video encoding and decoding technology) to make the image transmission more stable and smooth. Moreover, the built-in WEB server of this series improves the performance of the traditional surveillance system so that users can be easy to operate and monitor.

This product is widely used in banks, telecommunication systems, electricity power departments, law systems, factories, storehouses, uptowns, etc. In addition, it is also an ideal choice for surveillance sites with middle or high risks.

## Main Features

- 5MP (2592×1944) @30fps
- H.265+ /H.265/H.264+/H.264 coding
- ICR auto switch, true day/night
- 3D DNR, true WDR, ROI coding, BLC, HLC, Defog, Anti-flicker
- Intelligent analytics
- Support mobile surveillance by smart phones with iOS and Android OS

## Surveillance Application



## 2 Network Connection

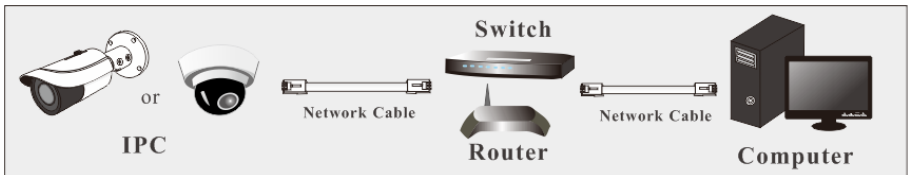
Connect IP-Cam via LAN or WAN. Here only take IE browser for example. The details are as follows:

### 2.1 LAN

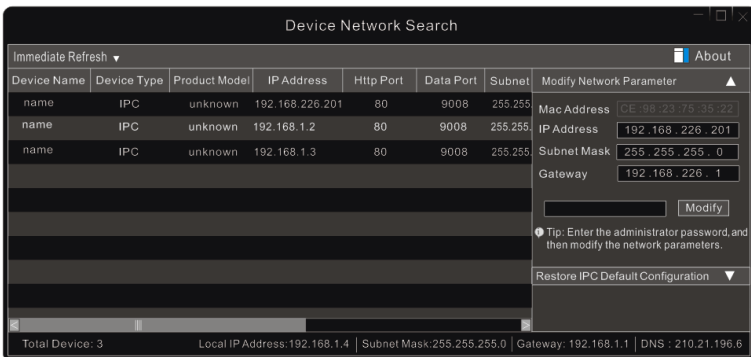
In LAN, there are two ways to access IP-Cam: 1. access through IP-Tool; 2. directly access through IE browser.

#### 2.1.1 Access through IP-Tool

Network connection:



- ① Make sure the PC and IP-Cam are connected to the LAN and the IP-Tool is installed in the PC from the CD.
- ② Double click the IP-Tool icon on the desktop to run this software as shown below:



- ③ Modify the IP address. The default IP address of this camera is 192.168.226.201. Click the information of the camera listed in the above table to show the network information on the right hand. Modify the IP address and gateway of the camera and make sure its network address is in the same local network segment as the computer's. Please modify the IP address of your device according to the practical situation.

For example, the IP address of your computer is 192.168.1.4. So the IP address of the camera shall be changed to 192.168.1.X. After modification, please enter the password of the administrator and click the “Modify” button to modify the setting.



The default password of the administrator is “**123456**”.

④ Double click the IP address and then the system will pop up the IE browser to connect IP-CAM. Follow directions to download, install and run the Active X control.

Enter the username and password in the login window to log in.



The default username is “**admin**”; the default password is “**123456**”.

The system will pop up the above-mentioned textbox to ask you to change the default password. It is strongly recommended to change the default password for account security. If “Do not show again” is checked, the textbox will not appear next time.

## 2.1.2 Directly Access through IE

The default network settings are as shown below:

IP address: **192.168.226.201**

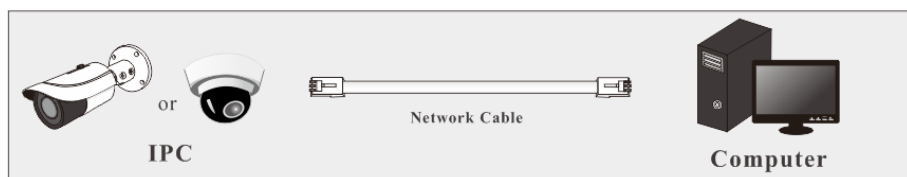
Subnet Mask: **255.255.255.0**

Gateway: **192.168.226.1**

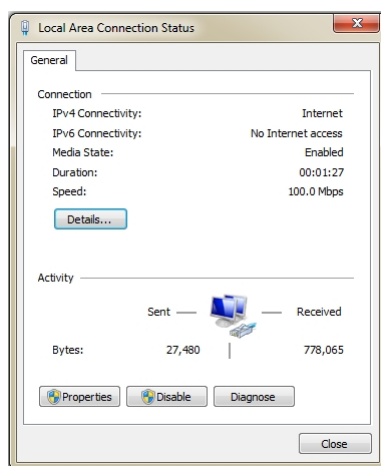
HTTP: **80**

Data port: **9008**

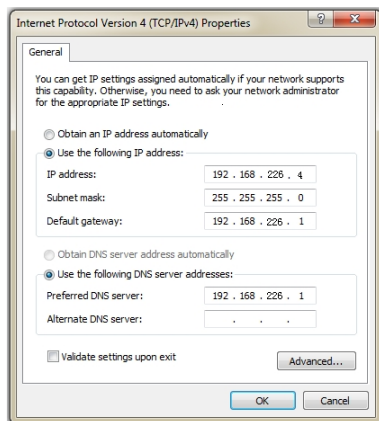
Use the above default settings when logging in the camera for the first time. Directly connect the camera to the computer through network cable.



① Manually set the IP address of the PC and the network segment should be as the same as the default settings of the IP camera. Open the network and share center. Click “Local Area Connection” to pop up the following window.



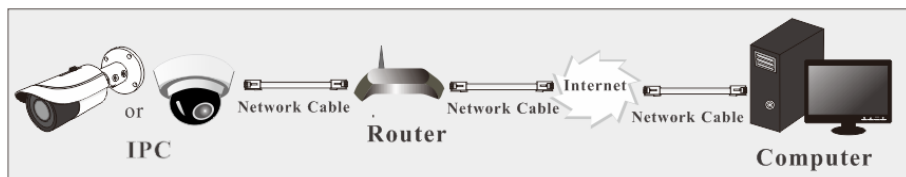
Select “Properties” and then select internet protocol according to the actual situation (for example: IPv4). Next, click the “Properties” button to set the network of the PC.



- ② Open the IE browser and enter the default address of IP-CAM and confirm.
- ③ Follow directions to download and install the Active X control.
- ④ Enter the default username and password in the login window and then enter to view.

## 2.2 WAN

### ➤ Access through the router or virtual server



- ① Make sure the camera is connected to the local network and then log in the camera via LAN and go to Config→Network→Port menu to set the port number.

HTTP Port	80
HTTPS Port	443
Data Port	9008
RTSP Port	554

Port Setup

- ② Go to Config →Network→TCP/IP menu to modify the IP address.

IPv4	IPv6	PPPoE Config	IP Change Notification Config
<input type="radio"/> Obtain an IP address automatically			
<input checked="" type="radio"/> Use the following IP address			
IP Address	192.168.226.201		Test
Subnet Mask	255.255.255.0		
Gateway	192.168.226.1		
Preferred DNS Server	210.21.196.6		
Alternate DNS Server	8.8.8.8		

IP Setup

③ Go to the router's management interface through IE browser to forward the IP address and port of the camera in the "Virtual Server".

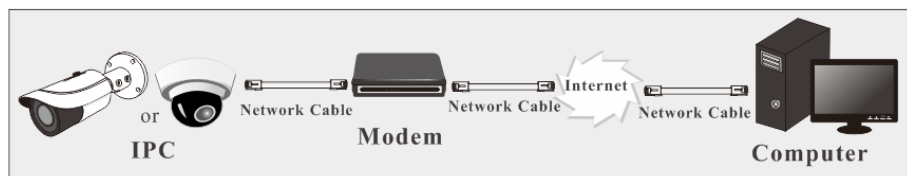
Port Range					
Application	Start	End	Protocol	IP Address	Enable
1	9007	to 9008	Both	192.168.1.201	<input checked="" type="checkbox"/>
2	80	to 81	Both	192.168.1.201	<input checked="" type="checkbox"/>
3	10000	to 10001	Both	192.168.1.166	<input type="checkbox"/>
4	21000	to 21001	Both	192.168.1.166	<input type="checkbox"/>

Router Setup

④ Open the IE browser and enter its WAN IP and http port to access. (for example, if the http port is changed to 81, please enter "192.198.1.201:81" in the address bar of web browser to access).

### ➤ Access through PPPoE dial-up

Network connection



Access the camera through PPPoE auto dial-up. The setup steps are as follow:



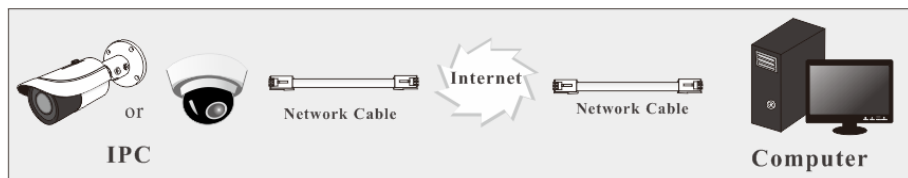
- ① Go to Config→Network→Port menu to set the port number.
- ② Go to Config →Network→TCP/IP→PPPoE Config menu. Enable PPPoE and then enter the user name and password from your internet service provider.

IPv4	IPv6	PPPoE Config	IP Change Notification Config
<input checked="" type="checkbox"/> Enable			
User Name		<input type="text" value="xxxxxxx"/>	
Password		<input type="password" value="•••••"/>	
<input type="button" value="Save"/>			

- ③ Go to Config →Network→DDNS menu. Before configuring the DDNS, please apply for a domain name first. Please refer to DDNS configuration for detail information.
- ④ Open the IE browser and enter the domain name and http port to access.

### ➤ Access through static IP

Network connection

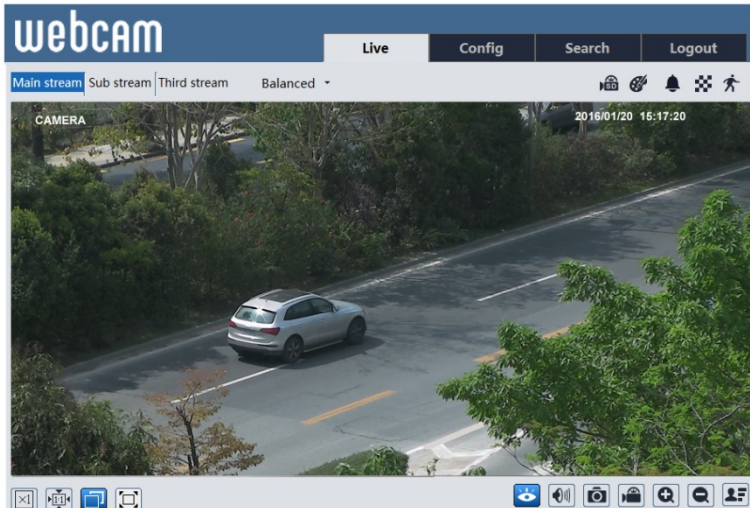


The setup steps are as follow:

- ① Go to Config→Network→Port menu to set the port number.
- ② Go to Config →Network→TCP/IP menu to set the IP address. Check “Use the following IP address” and then enter the static IP address and other parameters.
- ③ Open the IE browser and enter its WAN IP and http port to access.

### 3 Live View

After logging in, the following window will be shown.



The following table is the instructions of the icons on the live view interface.

Icon	Description	Icon	Description
	Original size		SD card recording indicator
	Fit correct scale		Motion alarm indicator
	Auto (fill the window)		Color abnormal indicator
	Full screen		Abnormal clarity indicator
	Start/stop live view		Scene change indicator
	Enable/disable audio		Line crossing indicator
	Snapshot		Intrusion indicator
	Start/stop local recording		Face detection indicator
	Zoom in		Target counting indicator
	Zoom out		Face capture


Those smart alarm indicators will flash only when the camera supports those functions and

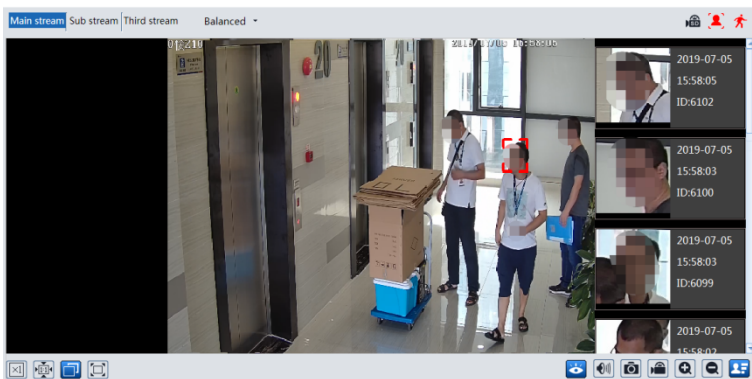
the corresponding events are enabled.

In full screen mode, double click on the mouse to exit or press the ESC key on the keyboard.

### Face Capture View

① Go to Config→Event→Face Detection interface. Check “Enable”.

② Return to the live view interface. Click  to go to the following interface. When there are faces detected, the face pictures will be listed on the right.



## 4 Network Camera Configuration

In the Webcam client, choose “Config” to go to the configuration interface.

**Note:** Wherever applicable, click the “Save” button to save the settings.

### 4.1 System Configuration

#### 4.1.1 Basic Information

In the “Basic Information” interface, the system information of the device is listed.

Device Name	IPC
Product Model	
Brand	Customer
Software Version	5.0.1.0(19131)
Software Build Date	2021-05-10
Kernel Version	02030245
Hardware Version	1.5-1515433
Onvif Version	20.06
Video Structured Version	1.0.0
Face Detection Version	1.0.2
OCX Version	2.1.7.3
MAC	00:84:24:43:0f:69

#### 4.1.2 Date and Time

Go to Config→System→Date and Time. Please refer to the following interface.

Zone

Date and Time

Time Zone: GMT+08 (Beijing, Hong Kong, Shanghai, Taipei) ▼

☐ DST

☒ Auto DST

☐ Manual DST

Start Time May ▼ First ▼ Tuesday ▼ 15 ▼ Hour

End Time August ▼ First ▼ Tuesday ▼ 15 ▼ Hour

Time Offset 30 Minutes ▼

Select the time zone and DST as required.

Click the “Date and Time” tab to set the time mode.

Zone: **Date and Time**

Time Mode:

☐ Synchronize with NTP server

NTP server:  Update period:  Minutes

☐ Synchronize with computer time

Date  Time

☒ Set manually

Date   Time

### 4.1.3 Local Config

Go to Config→System→Local Config to set up the storage path of captured pictures and recorded videos on the local PC. There is also an option to enable or disable the bitrate display in the recorded files.

Picture Path

Record Path

Video Audio Settings ☐ Open ☒ Close

Show Bitrate ☐ Open ☒ Close

Local Smart Snapshot Storage ☐ Open ☒ Close

Additionally, “Local smart snapshot storage” can be enabled or disabled here. If enabled, the captured pictures triggered by smart events (like line crossing detection, region intrusion, etc.) will be saved to the local PC.

### 4.1.4 Storage

Go to Config→System→Storage to go to the interface as shown below.

**Management** Record Snapshot

Total picture capacity

Picture remaining space

Total recording capacity

Record remaining space

State

Snapshot Quota  %

Video Quota  %

Changes in the quota ratio need to be formatted before they become effective.

#### ● SD Card Management

Click the “Format” button to format the SD card. All data will be cleared by clicking this button.

Click the “Eject” button to stop writing data to SD card. Then the SD card can be ejected safely.

**Snapshot Quota:** Set the capacity proportion of captured pictures on the SD card.

**Video Quota:** Set the capacity proportion of record files on the SD card.

## ● Schedule Recording Settings

1. Go to Config→System→Storage→Record to go to the interface as shown below.

2. Set record stream, pre-record time, cycle writing.

**Pre Record Time:** Set the time to record before the actual recording begins.

3. Set schedule recording. Check “Enable Schedule Record” and set the schedule.

### Weekly schedule

Set the alarm time from Monday to Sunday for a single week. Each day is divided in one hour

increments. Green means scheduled. Blank means unscheduled.

“Add”: Add the schedule for a special day. Drag the mouse to set the time on the timeline.

“Erase”: Delete the schedule. Drag the mouse to erase the time on the timeline.

Manual Input: Click it for a specific day to enter specific start and end times. This adds more granularities (minutes).

### Day schedule

Set the alarm time for alarm a special day, such as a holiday.

**Note: Holiday schedule takes priority over weekly schedule.**

### ● Snapshot Settings

Go to Config→System→Storage→Snapshot to go to the interface as shown below.

Management   Record <b>Snapshot</b>	
<b>Snapshot Parameters</b>	
Image Format	JPEG
Resolution	704x576
Image Quality	Low
<b>Event Trigger</b>	
Snapshot Interval	1 Second
Snapshot Quantity	5
<b>Timing</b>	
<input type="checkbox"/> Enable Timing Snapshot	
Snapshot Interval	5 Second

Set the format, resolution and quality of the image saved on the SD card and the snapshot interval and quantity and the timing snapshot here.

**Snapshot Quantity:** The number you set here is the maximum quantity of snapshots. The actual quantity of snapshots may be less than this number. Supposing the occurrence time of an alarm event is less than the time of capturing pictures, the actual quantity of snapshots is less than the set quantity of snapshots.

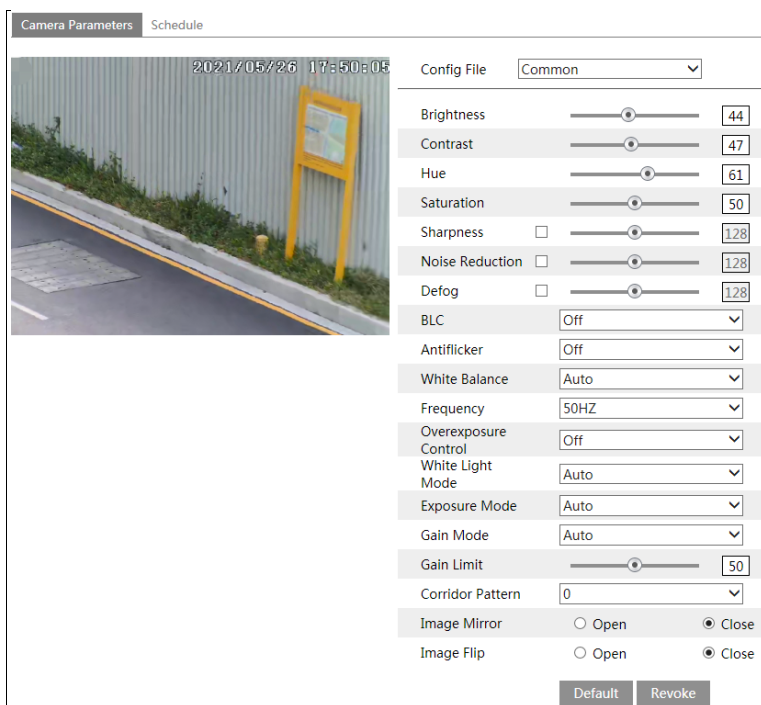
**Timing Snapshot:** Enable timing snapshot first and then set the snapshot interval and schedule. The setup steps of schedule are the same as the schedule recording (See [Schedule Recording](#)).

## 4.2 Image Configuration

Image Configuration includes Display, Video/Audio, OSD, Video Mask and ROI Config.

### 4.2.1 Display Configuration

Go to Image→Display interface as shown below. The image's brightness, contrast, hue and saturation and so on for common, day and night mode can be set up separately. The image effect can be quickly seen by switching the configuration file.



The screenshot shows the 'Camera Parameters' interface with the 'Schedule' tab selected. On the left is a live video feed of a street scene with a timestamp '2021/05/26 17:50:03'. On the right is a configuration panel for the 'Common' config file. The settings are as follows:

Parameter	Value
Brightness	44
Contrast	47
Hue	61
Saturation	50
Sharpness	<input type="checkbox"/> 128
Noise Reduction	<input type="checkbox"/> 128
Defog	<input type="checkbox"/> 128
BLC	Off
Antiflicker	Off
White Balance	Auto
Frequency	50HZ
Overexposure Control	Off
White Light Mode	Auto
Exposure Mode	Auto
Gain Mode	Auto
Gain Limit	50
Corridor Pattern	0
Image Mirror	<input type="radio"/> Open <input checked="" type="radio"/> Close
Image Flip	<input type="radio"/> Open <input checked="" type="radio"/> Close

At the bottom of the configuration panel are 'Default' and 'Revoke' buttons.

**Brightness:** Set the brightness level of the camera's image.

**Contrast:** Set the color difference between the brightest and darkest parts.

**Hue:** Set the total color degree of the image.

**Saturation:** Set the degree of color purity. The purer the color, the brighter the image is.

**Sharpness:** Set the resolution level of the image plane and the sharpness level of the image edge.

**Noise Reduction:** Decrease the noise and make the image more thorough. Increasing the value will make the noise reduction effect better but it will reduce the image resolution.

**Defog:** Activating this function and setting an appropriate value as needed in foggy, dusty, smoggy or rainy environment to get clear images.

**Backlight Compensation (BLC):**

- Off: disables the backlight compensation function. It is the default mode.



- **HWDR:** WDR can adjust the camera to provide a better image when there are both very bright and very dark areas simultaneously in the field of the view by lowering the brightness of the bright area and increasing the brightness of the dark area.

Recording will be stopped for a few seconds while the mode is changing from non-WDR to WDR mode.

- **HLC:** lowers the brightness of the entire image by suppressing the brightness of the image's bright area and reducing the size of the halo area.

- **BLC:** If enabled, the auto exposure will activate according to the scene so that the object of the image in the darkest area will be seen clearly.

**Antiflicker:**

- **Off:** disables the anti-flicker function. This is used mostly in outdoor installations.

- **50Hz:** reduces flicker in 50Hz lighting conditions.

- **60Hz:** reduces flicker in 60Hz lighting conditions.

**White Balance:** Adjust the color temperature according to the environment automatically.

**Frequency:** 50Hz and 60Hz can be optional.

**Overexposure Control:** Choose "OFF", "Low", "Mid" or "High". This function can automatically adjust the exposure parameter according to the actual effect of the image, effectively avoiding detail missing caused by image overexposure, so that the image will be more vivid. Please set it as needed.

**White Light Mode:** Choose "Off", "Auto" or "Manual". Please select it as needed.

**Exposure Mode:** Choose "Auto" or "Manual". If manual is chosen, the digital shutter speed can be adjusted.

**Gain Mode:** Choose "Auto" or "Manual". If "Auto" is selected, the gain value will be automatically adjusted according to the actual situation. If "Manual" is selected, the gain value shall be set manually. The higher the value is, the brighter the image is.

**Corridor Pattern:** Corridor viewing modes can be used for situations such as long hallways. 0, 90, 180 and 270 are available. The default value is 0. The video resolution should be 1080P or below if this function is used.

**Image Mirror:** Turn the current video image horizontally.

**Image Flip:** Turn the current video image vertically.

Schedule Settings of Image Parameters:

Click the "Schedule" tab as shown below.

Camera Parameters	Schedule
Schedule	Full Time ▼
Config File	Common ▼

Set full time schedule for common, day, night mode and specified time schedule for day and night. Choose "Schedule" in the drop-down box of schedule as shown below.

Drag “” icons to set the time of day and night. Blue means day time and blank means night time. If the current mode of camera parameters is set to schedule, the image configuration mode will automatically switch between day and night according to the schedule.

## 4.2.2 Video / Audio Configuration

Go to Image→Video / Audio interface as shown below. In this interface, set the resolution, frame rate, bitrate type, video quality and so on subject to the actual network condition.

Index	Stream	Resolution	Frame	Bitrate	Bitrate(Kbps)	Video	I Frame	Video	Profile
1	Main stre...	2592x1944	25	CBR	4096	Highes	100	H264	High Profile
2	Sub stream	704x576	25	CBR	480	Highes	100	H264	High Profile
3	Third stre...	352x288	25	CBR	128	Higher	100	H264	High Profile

Send Snapshot Sub stream Size: (704x576)

☐ Video encode slice split

☐ Watermark ( H264 , H265 )      Watermark content:

Three video streams can be adjustable.

**Resolution:** The size of image.

**Frame rate:** The higher the frame rate, the video is smoother.

**Bitrate type:** CBR and VBR are optional. Bitrate is related to image quality. CBR means that no matter how much change is seen in the video scene, the compression bitrate will be kept constant. VBR means that the compression bitrate will be adjusted according to scene changes. For example, for scenes that do not have much movement, the bitrate will be kept at a lower value. This can help optimize the network bandwidth usage.

**Bitrate:** it can be adjusted when the mode is set to CBR. The higher the bitrate, the better the image quality will be.

**Video Quality:** It can be adjusted when the mode is set to VBR. The higher the image quality, the more bitrate will be required.

**I Frame interval:** It determines how many frames are allowed between a “group of pictures”. When a new scene begins in a video, until that scene ends, the entire group of frames (or pictures) can be considered as a group of pictures. If there is not much movement in the scene, setting the value higher than the frame rate is fine, potentially resulting in less bandwidth usage. However, if the value is set too high, and there is a high frequency of movement in the video, there is a risk of frame skipping.

**Video Compression:** MJPEG, H264+, H264, H265, H265+ can be optional. MJPEG is not available for main stream. Compared to H.265, H.265+ saves more storage space with the same maximum bitrate in most scenes. Compared to H.264, H.265 reduces the transmission bitrate under the same resolution, frame rate and image quality. If H.265/H.265+ is chosen, make sure the client system is able to decode H.265/H.265+.

**Profile:** For H.264. Baseline, main and high profiles are selectable.

**Send Snapshot:** Set the snapshot stream as needed.

**Video encode slice split:** If this function is enabled, smooth image can be gotten even though using the low-performance PC.

**Watermark:** When playing back the local recorded video in the search interface, the watermark can be displayed. To enable it, check the watermark box and enter the watermark text.

Click the “Audio” tab to go to the interface as shown below.

Video

Audio

☒ Enable

Audio Encoding
 

G711A

Audio Type
 

LIN


Save

**Audio Encoding:** G711A and G711U are selectable.

**Audio Type:** LIN. MIC can be optional for the model with built-in MIC.

## 4.2.3 OSD Configuration

Go to Image→OSD interface as shown below.



Date Format
 

MM/DD/YYYY

☒ Show Timestamp

Device Name
 

IPC

☒ Show Device Name

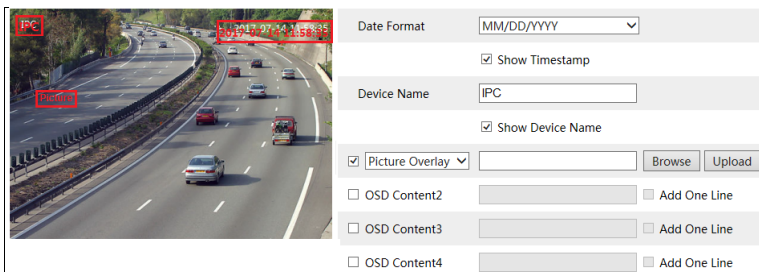
☒ OSD Content1
 ☒ Add One Line

☐ OSD Content2
 ☐ Add One Line

☐ OSD Content3
 ☐ Add One Line

☐ OSD Content4
 ☐ Add One Line

Set time stamp, device name, OSD content and picture overlap here. After enabling the corresponding display and entering the content, drag them to change their position. Then click the “Save” button to save the settings.

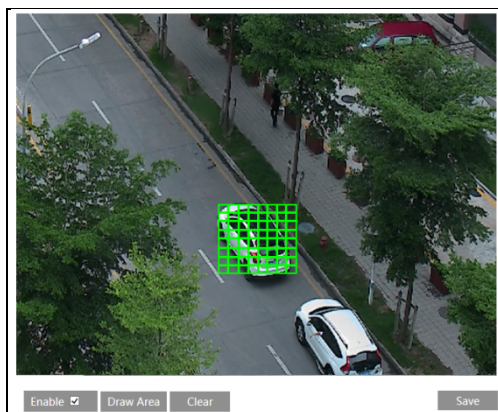


#### Picture Overlay Settings:

Check “OSD Content1”, choose “Picture Overlay” and click “Browse” to select the overlap picture. Then click “Upload” to upload the overlap picture. The pixel of the image shall not exceed 200\*200, or it cannot be uploaded.

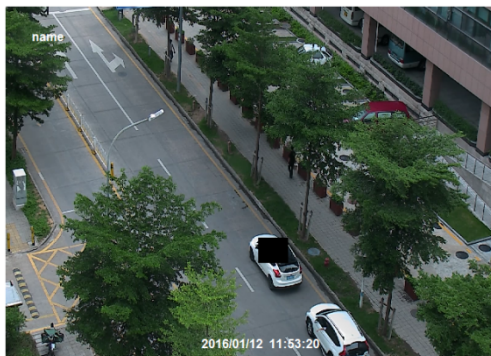
### 4.2.4 Video Mask

Go to Image→Video Mask interface as shown below. A maximum of 4 zones can be set up.



To set up video mask:

1. Enable video mask.
2. Click the “Draw Area” button and then drag the mouse to draw the video mask area.
3. Click the “Save” button to save the settings.
4. Return to the live to verify that the area have been drawn as shown as blocked out in the image.

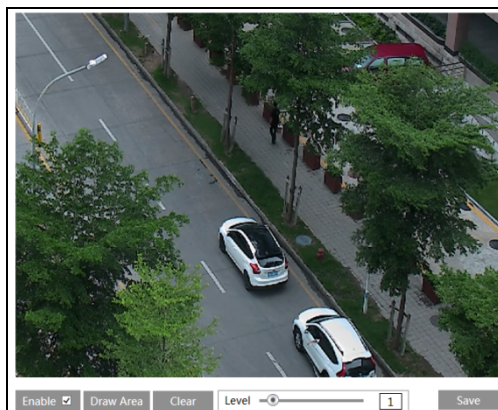


To clear the video mask:

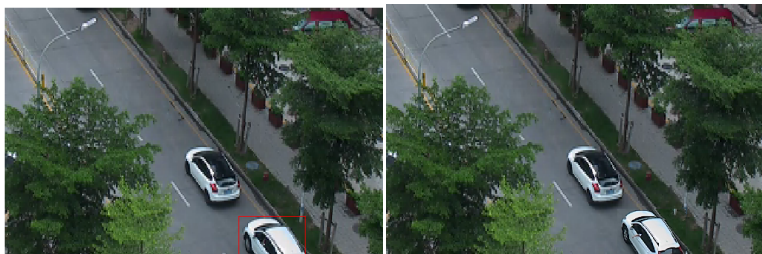
Click the “Clear” button to delete the current video mask area.

### 4.2.5 ROI Configuration

Go to Image→ROI Config interface as shown below. An area in the image can be set as a region of interest. This area will have a higher bitrate than the rest of the image, resulting in better image quality for the identified area.



1. Check “Enable” and then click the “Draw Area” button.
2. Drag the mouse to set the ROI area.
3. Set the level.
4. Click the “Save” button to save the settings.



## 4.3 Alarm Configuration

### 4.3.1 Motion Detection

Go to Alarm→Motion Detection to set motion detection alarm.

Alarm Config

Area and Sensitivity

Schedule

☒ Enable

Alarm Holding Time
 

20 Seconds

☐ Trigger SD Snap

☐ Trigger SD Recording

☐ Trigger Email

☐ Trigger FTP

Save

1. Check “Enable” check box to activate motion based alarms. If unchecked, the camera will not send out any signals to trigger motion-based recording to the NVR or CMS, even if there is motion in the video.

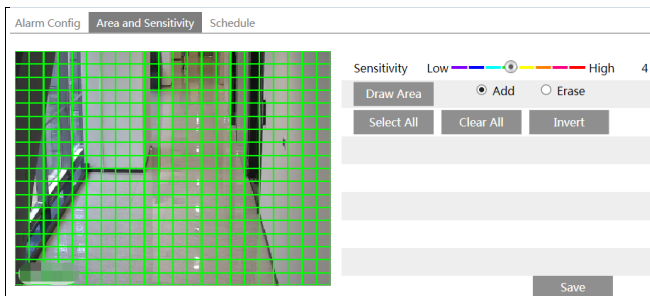
**Trigger SD Snap:** If selected, the system will capture images on motion detection and save the images on an SD card.

**Trigger SD Recording:** If selected, video will be recorded on an SD card on motion detection.

**Trigger Email:** If “Trigger Email” and “Attach Picture” are checked (email address must be set first in the Email configuration interface), the captured pictures and triggered event will be sent into those addresses.

**Trigger FTP:** If “Trigger FTP” and “Attach Picture” are checked, the captured pictures will be sent into FTP server address. Please refer to FTP configuration chapter for more details.

2. Set motion detection area and sensitivity. Click the “Area and Sensitivity” tab to go to the interface as shown below.



Move the “Sensitivity” scroll bar to set the sensitivity. Higher sensitivity value means that motion will be triggered more easily.

Select “Add” and click “Draw”. Drag the mouse to draw the motion detection area; Select “Erase” and drag the mouse to clear motion detection area.

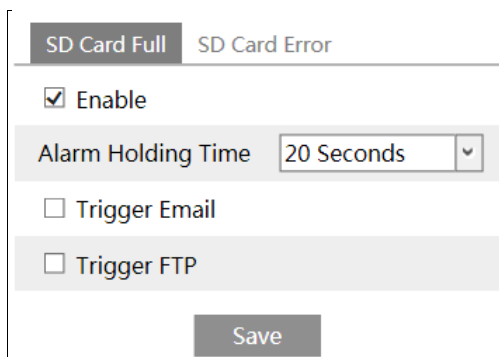
After that, click the “Save” to save the settings.

3. Set the schedule for motion detection. The schedule setup steps of the motion detection are the same as the schedule recording setup (See [Schedule Recording](#)).

### 4.3.2 Other Alarms

#### ● SD Card Full

1. Go to Config→Alarm→Anomaly→SD Card Full.



2. Click “Enable” and set the alarm holding time.

3. Set alarm trigger options. The setup steps are the same as motion detection. Please refer to motion detection chapter for details.

#### ● SD Card Error

When there are some errors in writing SD card, the corresponding alarms will be triggered.

1. Go to Config→Alarm→Anomaly→SD Card Error as shown below.

SD Card Full	SD Card Error
<input checked="" type="checkbox"/> Enable	
Alarm Holding Time <input type="text" value="20 Seconds"/>	
<input type="checkbox"/> Trigger Email	
<input type="checkbox"/> Trigger FTP	
<input type="button" value="Save"/>	

2. Click “Enable” and set the alarm holding time.

3. Set alarm trigger options. Trigger Email and FTP. The setup steps are the same as motion detection. Please refer to [motion detection](#) chapter for details.

### 4.3.3 Alarm Server

Go to Alarm→Alarm Server interface as shown below.

Set the server address, port, heartbeat and heartbeat interval. When an alarm occurs, the camera will transfer the alarm event to the alarm server. If an alarm server is not needed, there is no need to configure this section.

Server Address	<input type="text"/>
Port	<input type="text" value="0"/>
Heartbeat	<input type="text" value="Disable"/> ▼
Heartbeat interval	<input type="text" value="30"/> Second

## 4.4 Event Configuration

For more accuracy, here are some recommendations for installation.

- Cameras should be installed on stable surfaces, as vibrations can affect the accuracy of detection.
- Avoid pointing the camera at the reflective surfaces (like shiny floors, mirrors, glass, lake surfaces and so on).
- Avoid places that are narrow or have too much shadowing.
- Avoid scenario where the object's color is similar to the background color.
- At any time of day or night, please make sure the image of the camera is clear and with adequate and even light, avoiding overexposure or too much darkness on both sides.

### 4.4.1 Exception

This function can detect changes in the surveillance environment affected by the external



factors.

To set exception detection:

Go to Config→Event→Exception interface as shown below.

Detection Config   Sensitivity

☒ Scene Change Detection

☒ Video Blur Detection

☒ Video Cast Detection

Alarm Holding Time   20 Seconds   ▾

☐ Trigger SD Snap

☐ Trigger SD Recording

☐ Trigger Email

☐ Trigger FTP

Save

1. Enable the applicable detection that's desired.

**Scene Change Detection:** Alarms will be triggered if the scene of the monitor video has changed.

**Video Blur Detection:** Alarms will be triggered if the video becomes blurry.

**Video Cast Detection:** Alarms will be triggered if the video becomes obscured.

2. Set the alarm holding time and alarm trigger options. The setup steps are the same as motion detection. Please refer to motion detection chapter for details.

3. Click “Save” button to save the settings.

4. Set the sensitivity of the exception detection. Click “Sensitivity” tab to go to the interface as shown below.

Detection Configuration   Sensitivity

Sensitivity      28

Save

Drag the slider to set the sensitivity value or directly enter the sensitivity value in the textbox. Click “Save” button to save the settings.

**The sensitivity value of Scene Change Detection:** The higher the value is, the more sensitive the system responds to the amplitude of the scene change.

**The sensitivity value of Video Blur Detection:** The higher the value is, the more sensitive the system responds to the blurriness of the image.

**The sensitivity value of Video Cast Detection:** The higher the value is, the more sensitive

the system responds to the obscuring of the image.

### ※ The requirements of camera and surrounding area

1. Auto-focusing function should not been enabled for exception detection.
2. Try not to enable exception detection when light changes greatly in the scene.
3. Please contact us for more detailed application scenarios.

## 4.4.2 Line Crossing

**Line Crossing:** Alarms will be triggered if the target crosses the pre-defined alarm lines. Go to Config→Event→Line Crossing interface as shown below.

1. Enable line crossing detection and select the snapshot type and the detection target.

**Save Panoramic Picture:** If it is enabled, the detected panoramic pictures will be captured and saved to the SD card when the targets cross the alarm line.

**Save Target Cutout:** If it is enabled, the detected target cutout pictures will be captured and saved to the SD card when the targets cross the alarm line.

**Note:** To save snapshots to the local PC, please enable “Local Smart Snapshot Storage” in the local config interface first. To save snapshots to the SD card, please install an SD card first.

### Detection Target:

**Human:** Select it and then alarms will be triggered if someone crosses the pre-defined alarm lines.

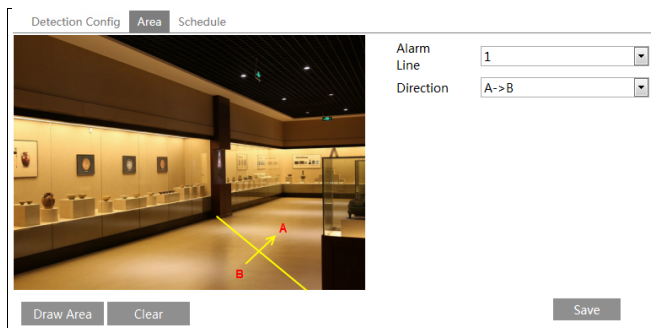
**Motor Vehicle:** Select it and then alarms will be triggered if a vehicle with four or more wheels (eg. a car, bus or truck) crosses the pre-defined alarm lines.

**Non-motor Vehicle:** Select it and then alarms will be triggered if a vehicle with two wheels (eg. a motorcycle or bicycle) crosses the pre-defined alarm lines.

All of the three types of objects can be selected simultaneously. Please select the detection objects as needed. If no object/target is selected, alarms will not be triggered even if line crossing detection is enabled.

2. Set the alarm holding time.

3. Set alarm trigger options. The setup steps are the same as motion detection. Please refer to [motion detection](#) chapter for details.
4. Click “Save” button to save the settings.
5. Set area of the line crossing alarm. Click the “Area” tab to go to the interface as shown below.



Set the alarm line number and direction. Up to 4 lines can be added. Multiple lines cannot be added simultaneously.

**Direction:** A<->B, A->B and A<-B optional. This indicates the direction of someone or a vehicle crosses over the alarm line.

**A<->B:** Alarms will be triggered when someone or a vehicle crosses over the alarm line from B to A or from A to B.

**A->B:** Alarms will be triggered when someone or a vehicle crosses over the alarm line from A to B.

**A<-B:** Alarms will be triggered when someone or a vehicle crosses over the alarm line from B to A.

Click the “Draw Area” button and then drag the mouse to draw a line in the image. Click the “Stop Draw” button to stop drawing. Click the “Clear” button to delete the lines. Click the “Save” button to save the settings.

6. Set the schedule of the line crossing alarm. The setup steps of the schedule are the same as the schedule recording setup (See [Schedule Recording](#)).

### ✖ Configuration of camera and surrounding area

1. Auto-focusing function should not be enabled for line crossing detection.
2. Avoid the scenes with many trees or the scenes with various light changes (like many flashing headlights). The ambient brightness of the scenes shouldn't be too low.
3. Cameras should be mounted at a height of 2.8 meters or above.
4. Keep the mounting angle of the camera at about 45°.
5. The detected objects should not be less than 1% of the entire image and the largest sizes of the detected objects should not be more than 1/8 of the entire image.
6. Make sure cameras can view objects for at least 2 seconds in the detected area for accurate detection.
7. Adequate light and clear scenery are crucial for line crossing detection.

### 4.4.3 Intrusion

**Intrusion:** Alarms will be triggered if the target intrudes into the pre-defined areas. This function can be applicable to important supervision places, danger areas and prohibited areas, like military administrative zones, high danger areas, no man's areas, etc.

Go to Config→Event→Intrusion interface as shown below.

Detection Config Area Schedule

☒ Enable

☐ Save Panoramic Picture

☐ Save Target Cutout

Detection Target

☒ Human Sensitivity  50

☒ Motor Vehicle Sensitivity  50

☒ Non-motor Vehicle Sensitivity  50

Alarm Holding Time 20 Seconds ▾

☐ Trigger SD Snap

☐ Trigger SD Recording

☐ Trigger Email

☐ Trigger FTP

Save

1. Enable intrusion detection and select the snapshot type and the detection target.
2. Set the alarm holding time.
3. Set alarm trigger options. The setup steps are the same as motion detection. Please refer to motion detection chapter for details.
4. Click the “Save” button to save the settings.
5. Set the alarm area of the intrusion detection. Click the “Area” tab to go to the interface as shown below.

Detection Config Area Schedule

Alarm Area 1 ▾

Draw Area Clear Save

Set the alarm area number on the right side. Up to 4 alarm areas can be added.

Click the “Draw Area” button and then click around the area where you want to set as the alarm area in the image on the left side (the alarm area should be a closed area). Click the

“Stop Draw” button to stop drawing. Click the “Clear” button to delete the alarm area. Click the “Save” button to save the settings.

6. Set the schedule of the intrusion detection. The setup steps of the schedule are the same as schedule recording setup (See [Schedule Recording](#)).

### ※ Configuration requirements of camera and surrounding area

1. Auto-focusing function should not be enabled for intrusion detection.
2. Avoid the scenes with many trees or the scenes with various light changes (like many flashing headlights). The ambient brightness of the scenes shouldn't be too low.
3. Cameras should be mounted at a height of 2.8 meters or above.
4. Keep the mounting angle of the camera at about 45°.
5. The detected objects should not be less than 1% of the entire image and the largest sizes of the detected objects should not be more than 1/8 of the entire image.
6. Make sure cameras can view objects for at least 2 seconds in the detected area for accurate detection.
7. Adequate light and clear scenery are crucial to intrusion detection.

## 4.4.4 Target Counting

This function is to calculate the number of the people or vehicles crossing the alarm line through detecting, tracking and counting the shapes of the people or vehicles.

1. Go to Config→Event→Target Counting as shown below.

2. Enable target counting and select the snapshot type and the detection target.

**Save Panoramic Picture:** If it is enabled, the detected panoramic pictures will be captured and saved to the SD card when the targets cross the pre-defined alarm line.

**Save Target Cutout:** If it is enabled, the detected target cutout pictures will be captured and saved to the SD card when the targets cross the pre-defined alarm line.

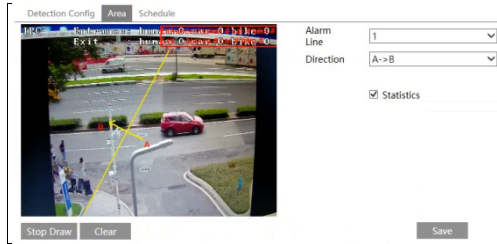
**Note:** To save snapshots to the local PC, please enable “Local Smart Snapshot Storage” in the local config interface first. To save snapshots to the SD card, please install an SD card first.

**Detection Target:** Select the target to calculate. Human, motor vehicle and motorcycle/bicycle can be selected.

**Counting Reset:** The current number of the target counting can be reset. You can choose to

reset the counting daily, weekly or monthly. Click “Reset” to manually reset the current number of crossing line people/car/bike counting.

3. Set the area of the target counting. Click the “Area” tab to go to the interface as shown below.



Set the alarm line number and direction. Only one alarm line can be added.

**Direction:** A->B and A<-B can be optional. The direction of the arrow is entrance.

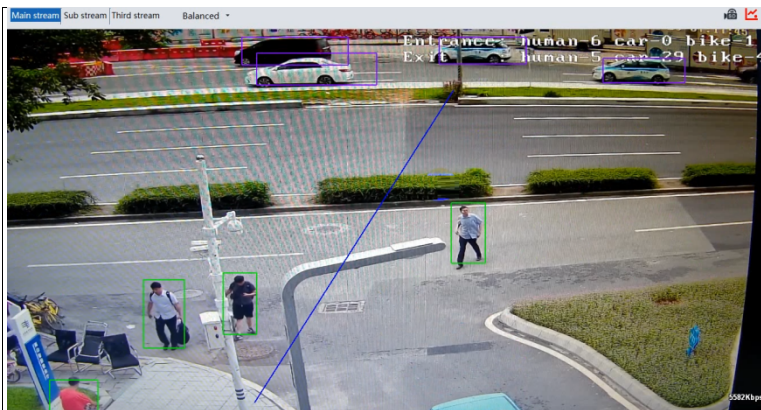
Click the “Draw Area” button and then drag the mouse to draw a line in the image. Click the “Stop Draw” button to stop drawing. Click the “Clear” button to delete the lines.

Statistics: If enabled, you can see the statistical information in the live view interface. If disabled, the statistical information will not be displayed in the live view interface.

Check “Statistics” and then move the red box to change the position of the statistical information displayed on the screen. Click the “Save” button to save the settings.

4. Set the schedule of the target counting. The setup steps of the schedule are the same as schedule recording setup (See [Schedule Recording](#)).

5. View the statistical information in the live view interface.



#### 4.4.5 Face Detection

Face detection function is to detect the face appearing in the surveillance scene. Alarms will be triggered when a face is detected.

The setting steps are as follows:

1. Go to Config→Event→Face Detection as shown below.

The screenshot shows the 'Face Detection' configuration page. At the top, there are four tabs: 'Detection Config' (active), 'Area', 'Advanced', and 'Schedule'. Below the tabs, the 'State' is set to 'Working'. The 'Enable' checkbox is checked. The 'Save Source Information' and 'Save Face Information' checkboxes are unchecked. The 'Alarm Holding Time' is set to '20 Seconds'. The 'Trigger SD Snap', 'Trigger SD Recording', 'Trigger Email', and 'Trigger FTP' checkboxes are all unchecked. A 'Save' button is located at the bottom right of the configuration area.

2. Enable the face detection function.

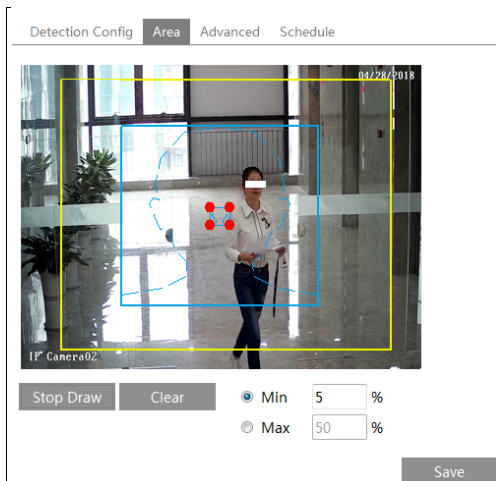
Save Source Information: if checked, the whole picture will be saved to the SD card when detecting a face.

Save Face Information: if checked, the captured face picture will be saved to the SD card when detecting a face.

**Note:** To save images to the local PC, please enable the local smart snapshot storage first (Config→System→Local Config). To save images to the SD card, please install an SD card first.

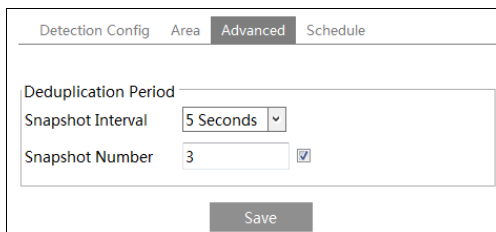
3. Set alarm holding time and alarm trigger options. The alarm trigger setup steps are the same as motion detection setup. Please refer to [motion detection](#) chapter for details.

4. Set alarm detection area.



Click “Draw Area” and drag the border lines of the rectangle to modify its size. Move the rectangle to change its position. Click “Stop Draw” to stop drawing the area. Click “Clear” to clear the area. Then set the detectable face size by defining the maximum value and the minimum value (The default size range of a single face image occupies from 3% to 50% of the entire image).

5. Advanced settings. Choose the snapshot interval and number as needed to avoid capturing multiple similar pictures in a very short period of time.



Snapshot Interval: If 5 seconds is selected, the camera will capture the same target once every 5 seconds during its continuous tracking period.

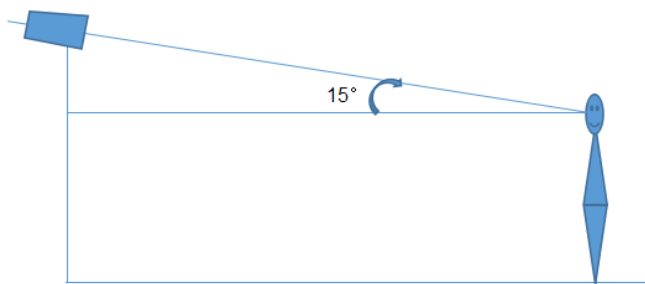
Snapshot Number: If the snapshot number is enabled and set (eg. 3), the camera will capture the same target once every 5 seconds and it will capture this target 3 times at most during its continuous tracking period. If the snapshot number is disabled, the camera will capture the same target once every 5 seconds until the target disappears in the detected area.

6. Set the schedule of the face detection. The setup steps of the schedule are the same as schedule recording setup (See [Schedule Recording](#)).

## ✂ Configuration requirements of camera and surrounding area



1. Cameras must be installed in the area with stable and adequate light sources.
2. The installation height ranges from 2.0m to 3.5m, adjustable according to the focal-length of different lenses and object distances.
3. The depression angle of the camera shall be less than or equal to  $15^{\circ}$ .



4. The object distance depends on the focal-length of the lens mounted in the camera.
5. To ensure the accuracy of face detection, the captured faces are only allowed to deviate less than  $30^{\circ}$  leftward or rightward or  $20^{\circ}$  upward or downward.
6. The following scenes are not applicable, like crowded scenes (airport, railway station, square, etc), backlight scenes, crossroads and so on.

## 4.5 Network Configuration

### 4.5.1 TCP/IP

Go to Config→Network→TCP/IP interface as shown below. There are two ways for network connection.

IPv4	IPv6	PPPoE Config	IP Change Notification Config
<input type="radio"/> Obtain an IP address automatically			
<input checked="" type="radio"/> Use the following IP address			
IP Address	192.168.226.201		Test
Subnet Mask	255.255.255.0		
Gateway	192.168.226.1		
Preferred DNS Server	210.21.196.6		
Alternate DNS Server	8.8.8.8		

**Use IP address (take IPv4 for example)**-There are two options for IP setup: obtain an IP address automatically by DHCP and use the following IP address. Please choose one of the options as needed.

**Test:** Test the effectiveness of the IP address by clicking this button.

**Use PPPoE**-Click the “PPPoE Config” tab to go to the interface as shown below. Enable

PPPoE and then enter the user name and password from your ISP.

IPv4	IPv6	PPPoE Config	IP Change Notification Config
<input checked="" type="checkbox"/> Enable			
User Name		<input type="text" value="xxxxxxx"/>	
Password		<input type="password" value="•••••••"/>	
<input type="button" value="Save"/>			

Either method of network connection can be used. If PPPoE is used to connect internet, the camera will get a dynamic WAN IP address. This IP address will change frequently. To be notified, the IP change notification function can be used.

Click “IP Change Notification Config” to go to the interface as shown below.

IPv4	IPv6	PPPoE Config	IP Change Notification Config
<input type="checkbox"/> Trigger Email			
<input type="checkbox"/> Trigger FTP			
<input type="button" value="Save"/>			

**Trigger Email:** when the IP address of the device is changed, the new IP address will be sent to the email address that has been set up.

**Trigger FTP:** when the IP address of the device is changed, the new IP address will be sent to FTP server that has been set up.

## 4.5.2 Port

Go to Config→Network→Port interface as shown below. HTTP port, Data port and RTSP port can be set.

HTTP Port	<input type="text" value="80"/>
HTTPS Port	<input type="text" value="443"/>
Data Port	<input type="text" value="9008"/>
RTSP Port	<input type="text" value="554"/>

**HTTP Port:** The default HTTP port is 80. It can be changed to any port which is not occupied.

**HTTPS Port:** The default HTTPS port is 443. It can be changed to any port which is not occupied. (Some models may not support)

**Data Port:** The default data port is 9008. Please change it as necessary.

**RTSP Port:** The default port is 554. Please change it as necessary.

### 4.5.3 Server Configuration

This function is mainly used for connecting network video management system.

☒ Enable  
 Server Port: 2009  
 Server Address:   
 Device ID: 1  
 Save

1. Check “Enable”.
2. Check the IP address and port of the transfer media server in the ECMS/NVMS. Then enable the auto report in the ECMS/NVMS when adding a new device. Next, enter the remaining information of the device in the ECMS/NVMS. After that, the system will automatically allot a device ID. Please check it in the ECMS/NVMS.
3. Enter the above-mentioned server address, server port and device ID in the corresponding boxes. Click the “Save” button to save the settings.

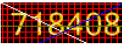
### 4.5.4 DDNS

If the camera is set up with a DHCP connection, DDNS should be set for the internet.

1. Go to Config→Network→ DDNS.

Port Server **DDNS** SNMP 802.1X RTSP UPnP Email FTP HTTPS QoS  
☒ Enable  
 Server Type: www.dyndns.com  
 User Name:   
 Password:   
 Domain:   
 Save

2. Apply for a domain name. Take www.dvrddns.com for example. Enter www.dvrddns.com in the IE address bar to visit its website. Then Click the “Registration” button.

NEW USER REGISTRATION	
USER NAME	<input type="text" value="XXXX"/>
PASSWORD	<input type="password" value="•••••"/>
PASSWORD CONFIRM	<input type="password" value="•••••"/>
FIRST NAME	<input type="text" value="XXX"/>
LAST NAME	<input type="text" value="XXX"/>
SECURITY QUESTION	<input type="text" value="My first phone number."/>
ANSWER	<input type="text" value="XXXXXXXX"/>
CONFIRM YOU'RE HUMAN	 <input type="text" value="78408"/> Enter the text you see above
<input type="button" value="Submit"/> <input type="button" value="Reset"/>	

Create domain name.

*You must create a domain name to continue.*

Domain name must start with (a-z, 0-9). Cannot end or start, but may contain a hyphen and is not case-sensitive.

After the domain name is successfully applied for, the domain name will be listed as below.

Click a name to edit your domain settings.

NAME	STATUS	DOMAIN
654321ABC	✓	654321abc.dvrddns.com

Last Update: *Not yet updated* IP Address: 210.21.229.138

Create additional domain names

3. Enter the username, password, domain you apply for in the DDNS configuration interface.
4. Click the “Save” button to save the settings.

## 4.5.5 SNMP

To get camera status, parameters and alarm information and remotely manage the camera, the SNMP function can be used. Before using SNMP, please install an SNMP management tool and set the parameters of the SNMP, such as SNMP port, trap address.

1. Go to Config→Network→SNMP.

## 4.5.6 802.1x

If it is enabled, the camera’s data can be protected. When the camera is connected to the

network protected by the IEEE802.1x, user authentication is needed.

<input checked="" type="checkbox"/> Enable
Protocol Type <input type="text" value="EAP_MD5"/>
EAPOL Version <input type="text" value="1"/>
User Name <input type="text" value="test"/>
Password <input type="password" value="•••••"/>
Confirm Password <input type="password" value="•••••"/>

To use this function, the camera shall be connected to a switch supporting 802.1x protocol. The switch can be reckoned as an authentication system to identify the device in a local network. If the camera connected to the network interface of the switch has passed the authentication of the switch, it can be accessed via the local network.

Protocol type and EAPOL version: Please use the default settings.

User name and password: The user name and password must be the same with the user name and password applied for and registered in the authentication server.

## 4.5.7 RTSP

Go to Config→Network→RTSP.

<input checked="" type="checkbox"/> Enable
Port <input type="text" value="554"/>
Address <input type="text" value="rtsp://IP or domain name:port/profile1"/>
<input type="text" value="rtsp://IP or domain name:port/profile2"/>
<input type="text" value="rtsp://IP or domain name:port/profile3"/>
Multicast address
Main stream <input type="text" value="239.0.0.0"/> <input type="text" value="50554"/> <input type="checkbox"/> Automatic start
Sub stream <input type="text" value="239.0.0.1"/> <input type="text" value="51554"/> <input type="checkbox"/> Automatic start
Third stream <input type="text" value="239.0.0.2"/> <input type="text" value="52554"/> <input type="checkbox"/> Automatic start
Audio <input type="text" value="239.0.0.3"/> <input type="text" value="53554"/> <input type="checkbox"/> Automatic start
<input type="checkbox"/> Allow anonymous login (No username or password required)
<input type="button" value="Save"/>

Select “Enable” to enable the RTSP function.

**Port:** Access port of the streaming media. The default number is 554.

**RTSP Address:** The RTSP address (unicast) format that can be used to play the stream in a media player.

### Multicast Address

**Main stream:** The address format is

“rtsp://IP address: rtsp port/profile1?transportmode=mcast”.

**Sub stream:** The address format is

“rtsp://IP address: rtsp port/profile2?transportmode=mcast”.

**Third stream:** The address format is

“rtsp://IP address: rtsp port/profile3?transportmode=mcast”.

**Audio:** Having entered the main/sub stream in a VLC player, the video and audio will play automatically.

If “Allow anonymous login...” is checked, there is no need to enter the username and password to view the video.

If “auto start” is enabled, the multicast received data should be added into a VLC player to play the video.

**Note:**1. This camera support local play through a VLC player. Enter the RTSP address (unicast or multicast, eg. rtsp://192.168.226.201:554/profile1?transportmode=mcast) in a VLC player to realize the simultaneous play with the web client.

2. The IP address mentioned above cannot be the address of IPv6.

3. Avoid the use of the same multicast address in the same local network.

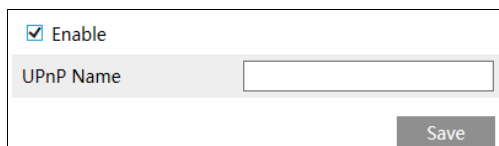
4. When playing the video through the multicast streams in a VLC player, please pay attention to the mode of the VLC player. If it is set to TCP mode, the video cannot be played.

5. If the coding format of the video of the main stream is MJPEG, the video may be disordered at some resolutions.

## 4.5.8 UPNP

If this function is enabled, the camera can be quickly accessed through the LAN.

Go to Config→Network→UPnP. Enable UPnP and then enter UPnP name.



☒ Enable

UPnP Name

Save

## 4.5.9 Email

If you need to trigger Email when an alarm happens or IP address is changed, please set the Email here first.

Go to Config→Network →Email.

Sender

Sender Address

XXX@126.com

User Name

XXX@126.com

Password

•••••

Server Address

smtp.126.com

Secure Connection

Unnecessary

SMTP Port

25

Default

☐ Send Interval(S)

0

(0-3600)

Clear

Test

Recipient

XXXX@126.com

Recipient Address

Add

Delete

Save

**Sender Address:** sender's e-mail address.

**User name and password:** sender's user name and password.

**Server Address:** The SMTP IP address or host name.

Select the secure connection type at the "Secure Connection" pull-down list according to what's required.

**SMTP Port:** The SMTP port.

**Send Interval(S):** The time interval of sending email. For example, if it is set to 60 seconds and multiple motion detection alarms are triggered within 60 seconds, they will be considered as only one alarm event and only one email will be sent. If one motion alarm event is triggered and then another motion detection alarm event is triggered after 60 seconds, two emails will be sent. When different alarms are triggered at the same time, multiple emails will be sent separately.

Click the "Test" button to test the connection of the account.

**Recipient Address:** receiver's e-mail address.

#### 4.5.10 FTP

After an FTP server is set up, captured pictures from events will be uploaded to the FTP server.

Go to Config→Network →FTP.

Server Name	Server Address	Port	User Name	Upload Path
<div style="border: 1px solid black; padding: 10px; margin: 10px auto; width: 80%;"> <div style="border-bottom: 1px solid black; margin-bottom: 5px;"></div> <div style="border-bottom: 1px solid black; margin-bottom: 5px;"></div> <div style="border-bottom: 1px solid black; margin-bottom: 5px;">Example/Dir/folder</div> <div style="border-bottom: 1px solid black; margin-bottom: 5px;">21</div> <div style="border-bottom: 1px solid black; margin-bottom: 5px;"></div> <div style="border-bottom: 1px solid black; margin-bottom: 5px;"></div> <div style="text-align: right; margin-top: 5px;"> <input type="checkbox"/> Anonymous         </div> <div style="text-align: center; margin-top: 10px;"> <span style="border: 1px solid black; padding: 2px 10px;">OK</span> <span style="border: 1px solid black; padding: 2px 10px; margin-left: 10px;">Cancel</span> </div> </div>				
<span style="border: 1px solid black; padding: 2px 10px; margin: 0 5px;">Add</span> <span style="border: 1px solid black; padding: 2px 10px; margin: 0 5px;">Modify</span> <span style="border: 1px solid black; padding: 2px 10px; margin: 0 5px;">Delete</span> <span style="border: 1px solid black; padding: 2px 10px; margin: 0 5px;">Test</span>				
<span style="border: 1px solid black; padding: 2px 10px;">Save</span>				

**Server Name:** The name of the FTP server.

**Server Address:** The IP address or domain name of the FTP.

**Upload Path:** The directory where files will be uploaded to.

**Port:** The port of the FTP server.

**User Name and Password:** The username and password that are used to login to the FTP server.

## 4.5.11 HTTPS

HTTPS provides authentication of the web site and protects user privacy.

Go to Config → Network → HTTPS as shown below.

☒ Enable

Certificate installed	C=CN, ST=GD, L=SZ, O=embeddedsoftware	Delete
Attribute	Issued to: C=CN, ST=GD, L=SZ, O=embeddedsoftware, OU=IPC, H=localhost, E=com.cn, Issuer: C=CN, ST=GD, L=SZ, O=embeddedsoftware, OU=IPC, H=localhost, E=com.cn, Validity date: 2017-07-26 01:02:07 ~ 2022-07-26 01:02:07	

Save

There is a certificate installed by default as shown above. Enable this function and save it. Then the camera can be accessed by entering https://IP: https port via the web browser (eg. https://192.168.226.201:443).

A private certificate can be created if users don't want to use the default one. Click "Delete" to cancel the default certificate. Then the following interface will be displayed.



☐ Enable

Installation type ☒ Have signed certificate, install directly  
☐ Create a private certificate  
☐ Create a certificate request

Install certificate

\* If there is a signed certificate, click “Browse” to select it and then click “Install” to install it.

\* Click “Create a private certificate” to enter the following creation interface.

☐ Enable

Installation type ☐ Have signed certificate, install directly  
☒ Create a private certificate  
☐ Create a certificate request

Create a private certificate

Click the “Create” button to create a private certificate. Enter the country (only two letters available), domain (camera’s IP address/domain), validity date, password, province/state, region and so on. Then click “OK” to save the settings.

\* Click “Create a certificate request” to enter the following interface.

☐ Enable

Installation type ☐ Have signed certificate, install directly  
☐ Create a private certificate  
☒ Create a certificate request

Create a certificate request

Click “Create” to create the certificate request. Then download the certificate request and submit it to the trusted certificate authority for signature. After receiving the signed certificate, import the certificate to the device.

## 4.5.12 QoS

QoS (Quality of Service) function is used to provide different quality of services for different network applications. With the deficient bandwidth, the router or switch will sort the data streams and transfer them according to their priority to solve the network delay and network congestion by using this function.

Go to Config→Network→QoS.

Video/Audio DSCP	13
Alarm DSCP	35
Manager DSCP	53

Video/Audio DSCP: The range is from 0 to 63.

Alarm DSCP: The range is from 0 to 63.

Manager DSCP: The range is from 0 to 63.

Generally speaking, the larger the number is, the higher the priority is.

## 4.6 Security Configuration

### 4.6.1 User Configuration

Go to Config→Security→User interface as shown below.

Add    Modify    Delete			
Index	User Name	User Type	Binding MAC
1	admin	Administrator	

#### Add user:

1. Click the “Add” button to pop up the following textbox.

Add User

User Name

Password

Level

The password can be composed of numbers, special characters, upper or lower case letters.

Confirm Password

User Type

Bind MAC

00:00:00:00:00:00

☐

OK

Cancel

2. Enter user name in “User Name” textbox.

3. Enter the password in the “Password” and “Confirm Password” textbox. Please set the password according to the requirement of the password security level (Go to Config→Security→Security Management→Password Security interface to set the security level).

It is recommended to set a high level password that shall be composed of numbers, special

characters, upper or lower case letters for your account security.

4. Choose the user type. Administrator has all permissions. Normal user can only view the live video. Advanced user has the same permissions as an Administrator except for; user, backup settings, factory reset, and upgrading the firmware.

5. Enter the MAC address of the PC in the “Bind MAC” textbox.

If this option is enabled, only the PC with the specified MAC address can access the camera for that user.

6. Click the “OK” button and then the newly added user will be displayed in the user list.

### Modify user:

1. Select a user to modify password and MAC address if necessary in the user configuration list box.

2. The “Edit user” dialog box pops up by clicking the “Modify” button.

3. Enter the old password of the user in the “Old Password” text box.

4. Enter the new password in the “New password” and “Confirm Password” text box.

5. Enter computer’s MAC address as necessary.

6. Click the “OK” button to save the settings.

**Note:** To change the access level of a user, the user must be deleted and added again with the new access level.

### Delete user:

1. Select the user to be deleted in the user configuration list box.

2. Click the “Delete” button to delete the user.

**Note:** The default administrator account cannot be deleted.

## 4.6.2 Online User

Go to Config→Security→Online User to view the user who is viewing the live video.

Index	Client Address	Port	User Name	User Type	
1	192.168.17.232	55760	admin	Administrator	Kick Out

An administrator user can kick out all the other users (including other administrators).

4.6.3 Block and Allow Lists

Go to Config→Security→Block and Allow Lists as shown below.

IP/MAC Address Filter Settings

☒ Enable address filtering

☒ Block the following address ☐ Allow the following address

Add

Delete

0.0.0.0

☒ IPv4 ☐ IPv6 ☐ MAC

Save

The setup steps are as follows:

Check the “Enable address filtering” check box.

Select “Block/Allow the following address”, IPv4/IPv6/MAC and then enter IP address or MAC address in the address box and click the “Add” button.

4.6.4 Security Management

Go to Config→Security→Security Management as shown below.

Security Service Password Security

☒ Enable "locking once illegal login" function

Save

In order to prevent against malicious password unlocking, “locking once illegal login” function can be enabled here. If this function is enabled, login failure after trying six times will make the login interface locked. The camera can be logged in again after a half hour or after the camera reboots.

● Password Security

Security Service Password Security

Password Level Weak

Expiration Time Never

Please set the password level and expiration time as needed.

Password Level: Weak, Medium or Strong.

Weak level: Numbers, special characters, upper or lower case letters can be used. You can choose one of them or any combination of them when setting the password.

Medium Level: 9~15 characters, including at least two of the following categories: numbers, special characters, upper case letters, lower case letters.

Strong Level: 9~15 characters. Numbers, special characters, upper case letters and lower case letters must be included.

For your account security, it is recommended to set a strong password and change your password regularly.

## 4.7 Maintenance Configuration

### 4.7.1 Backup and Restore

Go to Config→Maintenance→Backup & Restore.

**Import Setting**

Path

**Export Settings**

**Default Settings**

Keep

☐ Network Config

☐ Security Configuration

☐ Image Configuration

#### ● Import & Export Settings

Configuration settings of the camera can be exported from a camera into another camera.

1. Click “Browse” to select the save path for import or export information on the PC.
2. Click the “Import Setting” or “Export Setting” button.

#### ● Default Settings

Click the “Load Default” button to restore all system settings to the default factory settings except those you want to keep.

### 4.7.2 Reboot

Go to Config→Maintenance→Reboot.

Click the “Reboot” button to reboot the device.

#### Timed Reboot Setting:

If necessary, the camera can be set up to reboot on a time interval. Enable “Time Settings”, set the date and time and then click the “Save” button to save the settings.

### 4.7.3 Upgrade

Go to Config→Maintenance→Upgrade. In this interface, the camera firmware can be updated.

1. Click the “Browse” button to select the save path of the upgrade file
2. Click the “Upgrade” button to start upgrading the firmware.
3. The device will restart automatically

**Caution!** Do not close the browser or disconnect the camera from the network during the upgrade.

### 4.7.4 Operation Log

To query and export log:

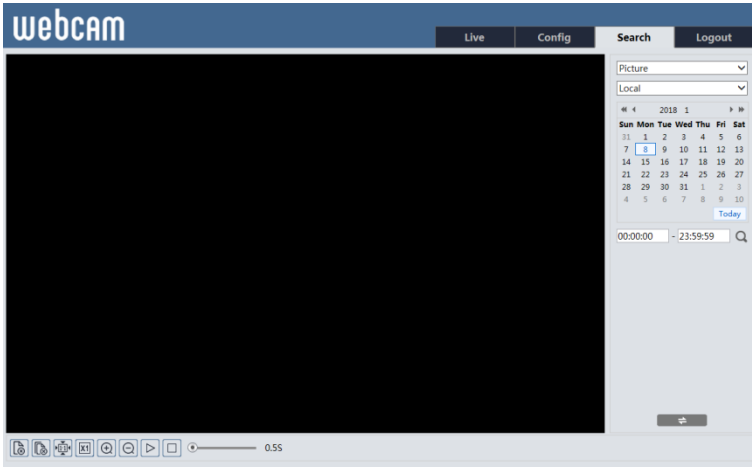
1. Go to Config→Maintenance→Operation Log.

Main Type:	All log	Sub Type:	All log		
Start Time:	2015-07-14 00:00:00	End Time:	2015-07-14 23:59:59	Search	Export
Index	Time	Main Type	Sub Type	User Name	Login IP
1	2015-07-14 11:15:18	Operation	Log in	admin	192.168.12.53
2	2015-07-14 11:12:02	Exception	Disconnected		192.168.12.53
3	2015-07-14 19:12:17	Exception	Disconnected		192.168.12.52


2. Select the main type, sub type, start and end time.
3. Click “Search” to view the operation log.
4. Click “Export” to export the operation log.

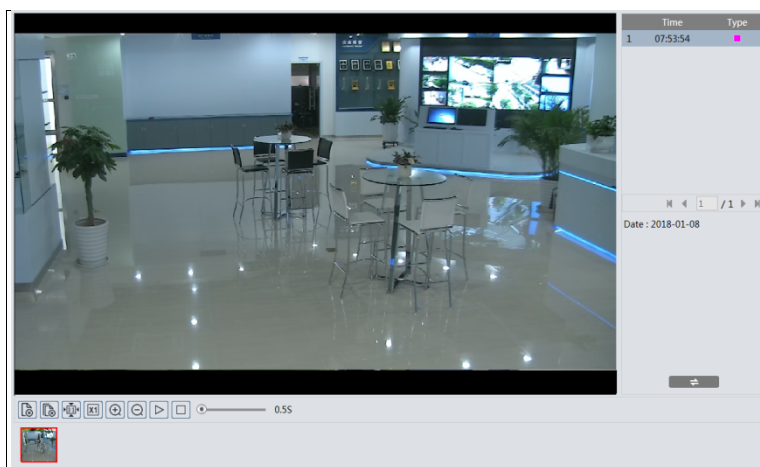
## 5.1 Image Search


Click Search to go to the interface as shown below. Images that are saved on the SD card can be found here.



### ● Local Image Search

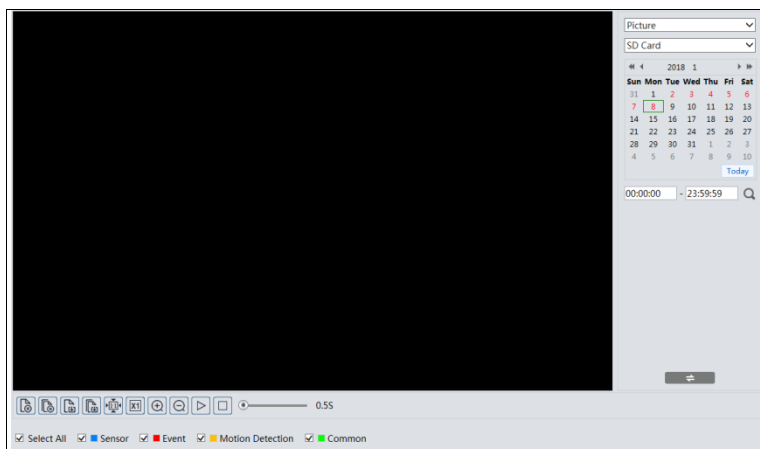
1. Choose “Picture”—“Local”.
2. Set time: Select date and choose the start and end time.
3. Click  to search the images.
4. Double click a file name in the list to view the captured photos as shown above.





Click  to return to the previous interface.

## ● SD Card Image Search












1. Choose “Picture”—“SD Card”.



2. Set time: Select date and choose the start and end time.
  3. Choose the alarm events at the bottom of the interface.
  4. Click  to search the images.
  5. Double click a file name in the list to view the captured photos.
- Click  to return to the previous interface.

The descriptions of the buttons are shown as follows.

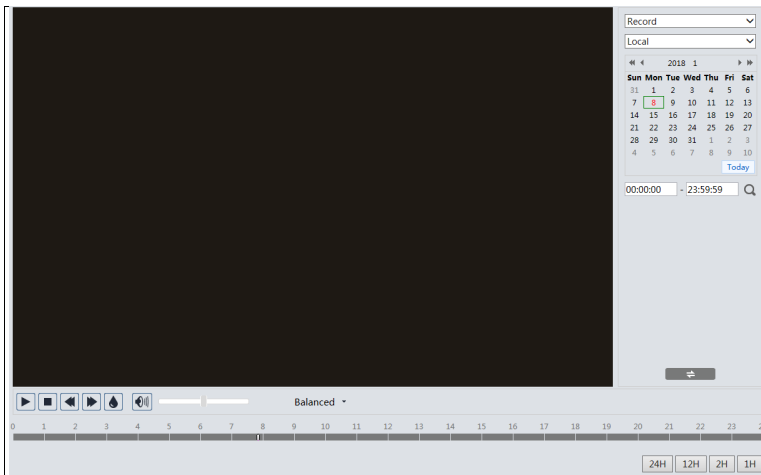



Icon	Description	Icon	Description
	Close: Select an image and click this button to close the image.		Close all: Click this button to close all images.
	Save: Click this button to select the path for saving the image on the PC.		Save all: Click this button to select the path for saving all pictures on the PC.
	Fit size: Click to fit the image on the screen.		Actual size: Click this button to display the actual size of the image.
	Zoom in: Click this button to digitally zoom in.		Zoom out: Click this button to digitally zoom out.
	Slide show play: Click this button to start the slide show mode.		Stop: Click this button to stop the slide show.
	Play speed: Play speed of the slide show.		

## 5.2 Video Search








### 5.2.1 Local Video Search

Click Search to go to the interface as shown below. Videos were recorded locally to the PC can be played in this interface.




1. Choose “Record”—“Local”.
2. Set search time: Select the date and choose the start and end time.
3. Click  to search the images.
4. Double click on a file name in the list to start playback.

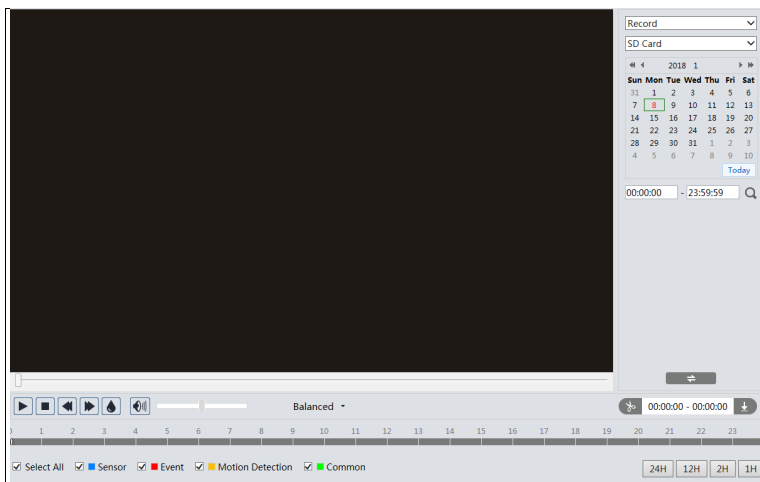


Icon	Description	Icon	Description
	Play button. After pausing the video, click this button to continue playing.		Pause button
	Stop button		Speed down
	Speed up		Watermark display
	Enable / disable audio; drag the slider to adjust the volume after enabling audio.		

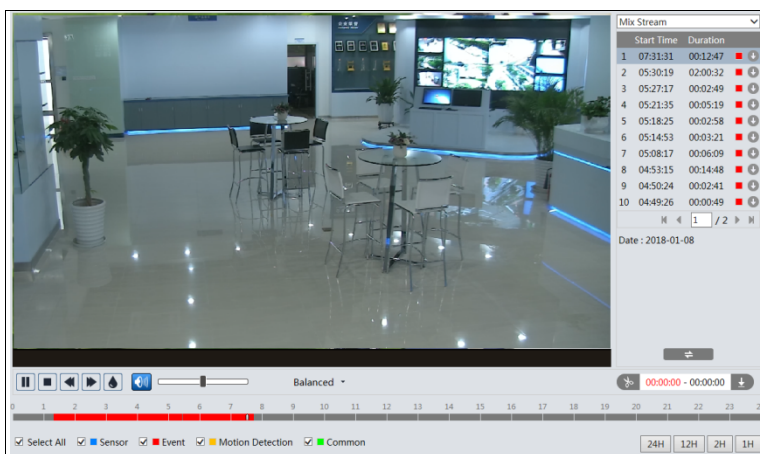
5.2.2 SD Card Video Search

Click Search to go to the interface as shown below. Videos that were recorded on the SD card can be played in this interface.

- 1. Choose “Record”—“SD Card”.
- 2. Set search time: Select the date and choose the start and end time.
- 3. Click  to search the images.







4. Select the alarm events at the bottom of the interface.
5. Select mix stream (video and audio stream) or video stream as needed.
6. Double click on a file name in the list to start playback.



The time table can be shown in 24H/12H/2H/1H format by clicking the corresponding buttons.

#### Video clip and downloading

1. Search the video files according to the above mentioned steps.
2. Select the start time by clicking on the time table.
3. Click  to set the start time and then this button turns blue ().
4. Select the end time by clicking on the time table. Then click  to set the end time.
5. Click  to download the video file in the PC.

Index	Process	Record	Start Time	End Time	Path	Operate
1	100%	Cut	2018-01-16 01:1...	2018-01-16 01:1...	<a href="#">Favorites</a>	<a href="#">Open</a>

Set up
D:\Favorites
Clear List
Close

Click “Set up” to set the storage directory of the video files.

Click “Open” to play the video.

Click “Clear List” to clear the downloading list.

Click “Close” to close the downloading window.

## Appendix 1 Troubleshooting

### How to find the password?

A: Reset the device to the default factory settings.

Default IP: 192.168.226.201; User name: admin; Password: 123456

### Fail to connect devices through IE browser.

A: Network is not well connected. Check the connection and make sure it is connected well.

B: IP address is not available. Reset the IP address.

C: Web port number has been changed: contact administrator to get the correct port number.

D: Exclude the above reasons. Restore to default setting by IP-Tool.

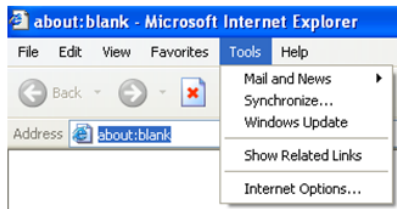
### IP tool cannot search devices.

It may be caused by the anti-virus software in your computer. Please exit it and try to search device again.

### IE cannot download ActiveX control.

A. IE browser may be set up to block ActiveX. Follow the steps below.

① Open IE browser and then click Tools-----Internet Options.

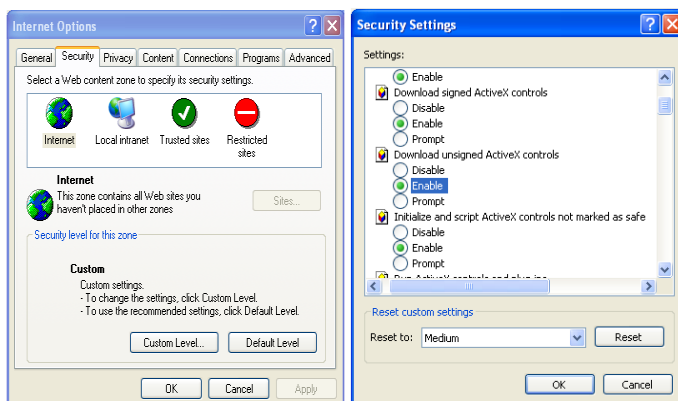


② Select Security-----Custom Level....

③ Enable all the options under “ActiveX controls and plug-ins”.

④ Click OK to finish setup.

B. Other plug-ins or anti-virus blocks ActiveX. Please uninstall or close them.





### No sound can be heard.

A: Audio input device is not connected. Please connect and try again.

B: Audio function is not enabled at the corresponding channel. Please enable this function.

## Appendix 2 Specifications

Specification /Model		 AI Bullet Network Camera
Camera	Image Sensor	1/2.7 " CMOS
	Image Size	2592×1944
	Electronic Shutter	1s~1/100000s
	Iris Type	Fixed Iris (fixed lens)
	Min. Illumination	0 lux (LED ON)
	Lens	2.8mm@F1.0, horizontal FoV:94.8°, vertical FoV:78.4°, diagonal FoV:107.3° 3.6mm@F1.0, horizontal FoV:77.9°, vertical FoV:62.5°,diagonal FoV:90.6°
	Lens Mount	M12
	Day&Night	ICR
	WDR	120dB
	Digital NR	3D DNR
	Angle Adjustment	Pan: 0°~360°; Tilt 0°~90°; Rotation:0°~360°
Image	Video Compression	H.265+/H.265/ H.264+/H.264/MJPEG
	H.264 Type	Baseline profile/main profile/high profile
	Video Bit Rate	64Kbps~8Mbps
	Resolution	5MP (2592×1944), 4MP (2592×1520), 2K(2560×1440), 3MP (2304×1296), 1080P (1920×1080), 720P(1280×720), D1, CIF, 480×240
	Main Stream	60Hz:5MP/4MP/2K/3MP/1080P/720P(1~30fps); 50Hz: 4MP/2K/3MP/1080P/720P(1~25fps)
	Sub Stream	60Hz: 720P/D1/CIF/480×240 (1~30fps); 50Hz: 720P/D1/CIF (1~25fps)
	Third Stream	60Hz: CIF/ D1/480×240 (1~30fps); 50Hz: CIF/D1/ 480×240 (1~25fps)
	Image Settings	BLC, HLC, Defog, Saturation, Brightness, Hue, Contrast, Wide Dynamic, Sharpness, NR, etc. adjustable through client or web browser
Interfaces	ROI	Support
	Network	RJ45
	Auido	1CH audio input
	Reset	Yes
Fuction	Storage	Built-in micro SD card slot; up to 256GB
	Remote Monitoring	Web browser, CMS remote control
	Online Connection	Support simultaneous monitoring for up to 10 users and multi-stream transmission
	Network Protocol	UDP, IPv4, IPv6, DHCP, NTP, RTSP, RTP, RTCP, ICMP, IGMP, PPPoE, DDNS, SMTP, FTP, SNMP,HTTP, 802.1x, UPnP, HTTPs, QoS
	Interface Protocol	ONVIF
	Storage	Network remote storage, micro SD card storage
	Smart Alarm	Motion detection, SD card Full, SD card error, abnormal video signal detection, line crossing detection(human/vehicle classification), intrusion detection(human/vehicle classification), people/vehicle counting, face detection, face capture
Others	White Light Range	20~30 m
	Protection Grade	IP67
	Power	DC12V/PoE
	Power Consumption	< 7W
	Oplertating Environment	Temperature: -30°C~60°C; Relative Humidity: less than 95% (non-condensing)
	Dimension (mm)	217.7×80.5×80.5
	Weight (net)	Approx. 0.68KG
	Installation	Wall mounting; ceiling mounting

pecification /Model		 AI Turret Network Cmera
Camera	Image Sensor	1/2.7 " CMOS
	Image Size	2592×1944
	Electronic Shutter	1s~1/100000
	Iris Type	Fixed Iris
	Min. Illumination	0 lux (LED ON)
	Lens	2.8mm@F1.0, horizontal FoV:94.8°, vertical FoV:78.4°, diagonal FoV:107.3° 3.6mm@F1.0, horizontal FoV:77.9°, vertical FoV:62.5°,diagonal FoV:90.6°
	Lens Mount	M12
	Day&Night	ICR
	WDR	120dB
	Digital NR	3D DNR
Image	Angle Adjustment	Pan: 0°~360°; Tilt 0°~75°; Rotation:0°~360°
	Video Compression	H.265+/H.265/ H.264+/H.264/MJPEG
	H.264 Type	Baseline profile/main profile/high profile
	Video Bit Rate	64Kbps~8Mbps
	Resolution	5MP (2592×1944), 4MP (2592×1520), 2K(2560×1440), 3MP (2304×1296), 1080P (1920×1080), 720P(1280×720), D1, CIF, 480×240
	Main Stream	60Hz:5MP/4MP/2K/3MP/1080P/720P(1~30fps); 50Hz: 4MP/2K/3MP/1080P/720P(1~25fps)
	Sub Stream	60Hz: 720P/D1/CIF/480×240 (1~30fps); 50Hz: 720P/D1/CIF (1~25fps)
	Third Stream	60Hz: CIF/ D1/480×240 (1~30fps); 50Hz: CIF/D1/ 480×240 (1~25fps)
	Image Settings	BLC, HLC, Defog, Saturation, Brightness, hue, Contrast, Wide Dynamic, Sharpness, NR, etc. adjustable through client or web browser
Interfaces	ROI	Support
	Network	RJ45
	Auido	1CH audio input; Built-in MIC×1
	Reset	Yes
Fuctionon	Storage	Built-in micro SD card slot; up to 256GB
	Remote Monitoring	Web browser, CMS remote control
	Online Connection	Support simultaneous monitoring for up to 10 users and multi-stream transmission
	Network Protocol	UDP, IPv4, IPv6, DHCP, NTP, RTSP, RTP, RTCP, ICMP, IGMP, PPPoE, DDNS, SMTP, FTP, SNMP,HTTP, 802.1x, UPnP, HTTPs, QoS
	Interface Protocol	ONVIF
	Storage	Network remote storage, micro SD card storage
	Smart Alarm	Motion detection, SD card Full, SD card error, abnormal video signal detection, line crossing detection(human/vehicle classification), intrusion detection(human/vehicle classification), people/vehicle counting, face detection, face capture
	Protection Grade	IP67
	Power	DC12V/PoE
	Power Consumption	< 7W
	White Light Range	20~30m
	Operating Environment	Temperature: -30°C~60°C; Relative Humidity: less than 95% (non-condensing)
	Dimension (mm)	Ø 94.6×82.8
	Weight ( net )	Approx. 0.46KG
	Installation	Ceiling mounting (Wall mounting available with the junction box and bracket)