

PBE4L3WZ-S/I/A

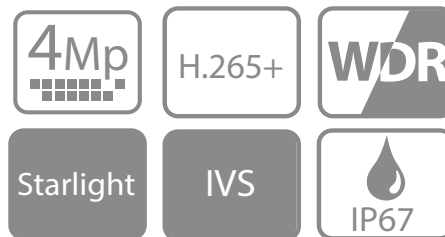
4MP Motorized Bullet Camera



- SMART H.264/H.265
- 1/3" 4MP CMOS image sensor
- Built-in IR LED, max distance: 50m
- Alarm: In, out; Max. 256 GB SD card
- 12V DC/POE power support
- IP67 protection

System Overview

This camera provides stunning clarity from its 4MP 1/3" CMOS Image Sensor, with Starlight enhancements for the darkest environments. The camera can be fixed to be zoomed out for a maximum viewing distance of 720 feet during the day and over 620 feet at night using IR. Supports built-in IVS features, like intelligent detection such as tripwire and intrusion detection. Notifications are immediately displayed on your recorder, Smart Device or computer connected on the same network. With an IP67 rating you won't have to worry about water or dust.



Features

Smart (H.265+ & H.264+)

Smart H.265+ technology is a collection of intelligent encoding algorithms based on H.265. To meet the characteristics of video surveillance, Smart H.265+ adopts some key video encoding techniques can be flexibly added/deleted or combined according to different applications and products. Smart H.265+ codec can effectively enhance video encoding efficiency according to the characteristics of different surveillance environments; furthermore, it can greatly reduce transmission bit rate, storage capacity to improve the overall system.

Wide dynamic range (WDR)

When part of an image is extremely dark but another part is so bright you can't see any details, that's dynamic range - the difference in lighting. Cameras with wide dynamic range (WDR) have special software that allows them to balance that lighting for one clear image. This makes them ideal for recording areas like store entrances where the contrast between the sunshine outside and the dim lighting inside can be extremely difficult to record.

Intelligent Video Analysis (IVS)

IVS system provides advanced, accurate video analytic for both IP and analog cameras. The IVS engine can track, classify and analyze the behavior of individual or group of objects over long distance to greatly improve parameter security and monitoring efficiency.

Starlight

The starlight standard sensor is just like the retina of your eyes which is sensitive to its ambient light, and the image quality is determined by how much light the sensor could use, together with the camera lens. The starlight camera technology uses larger and highly sensitive sensors, wider aperture and reduces the shutter speed to collect enough light for sharp monochrome/color images, even when human eyes couldn't identify a thing. So the starlight camera can see right through the darkness, even when it is challenging for your eyes.

Protection (IP67, wide voltage)

IP67: This camera passed a series of strict tests on dust and liquid. It is dust-proof and the enclosure can work normally after soaking in 1 meter of water for 30 minutes.

Wide voltage: The camera allows $\pm 30\%$ input voltage tolerance (wide voltage range), and it is widely applied to outdoor environments with instable voltage.

Technical Specification

Camera					
Image Sensor	1/3" CMOS				
Effective Pixels	2688 (H) × 1520 (V)				
ROM	128 MB				
RAM	128 MB				
Scanning System	Progressive				
Electronic Shutter Speed	Auto/Manual 1/3 s–1/100000 s				
Min. Illumination	0.01 Lux@F1.6				
IR Distance	50 m (164.04 ft) (IR)				
IR On/Off Control	Auto/Manual				
IR LEDs Number	4 (IR LED)				
Pan/Tilt/Rotation Range	Horizontal: 0°–360° Vertical: 0°–90° Rotation: 0°–360°				

Lens					
Lens Type	Motorized vari-focal				
Mount Type	φ14				
Focal Length	2.7 mm–13.5 mm				
Max. Aperture	F1.6				
Field of View	Horizontal: 104°–27° Vertical: 55°–15° Diagonal: 124°–31°				
Optical Zoom	5 times				
Iris Type	Fixed				
Close Focus Distance	0.8m–0.8m (2.62 ft–2.62 ft)				
DORI Distance	Lens	Detect	Observe	Recognize	Identify
	W	64 m (209.97 ft)	25.6 m (83.99 ft)	12.8 m (41.99 ft)	6.4 m (21.00 ft)
	T	220 m (721.78 ft)	88 m (288.71 ft)	44 m (144.36 ft)	22 m (72.18 ft)

Smart Event					
General IVS Analytics	Intrusion; tripwire				

Video					
Video Compression	H.265; H.264; H.264B; MJPEG				
Smart Codec	H.264: Yes H.265: Yes				
Video Frame Rate	50Hz Main stream (2560 × 1440@25 fps); sub stream (704 × 576@25 fps) Main stream (2688 × 1520@20 fps); sub stream (704 × 576@20 fps) 60Hz Main stream (2560 × 1440@30 fps); sub stream (704 × 480@30 fps) Main stream (2688 × 1520@20 fps); sub stream (704 × 480@20 fps)				
Stream Capability	Main stream; sub stream				
Resolution	2688 × 1520 (2688 × 1520); 2560 × 1440 (2560 × 1440); 2304 × 1296 (2304 × 1296); 1080p (1920 × 1080); 1.3M (1280 × 960); 720p (1280 × 720); D1 (704 × 576/704 × 480); VGA (640 × 480); CIF (352 × 288/352 × 240)				

Bit Rate Control	CBR/VBR
Video Bit Rate	H.264: 32 kbps–6144 kbps H.265: 12 kbps–6144 kbps
Day/Night	ICR switch
BLC	Yes
WDR	120 dB
White Balance	Auto/natural/street lamp/outdoor/manual/regional custom
Gain Control	Auto/Manual
Noise Reduction	3D DNR
Motion Detection	Disable/Enable (4 areas, rectangle)
Region of Interest(Rol)	Yes (4 areas)
Smart IR	Yes
Image Rotation	0°/90°/180°/270° (Supports 90°/270° with 2688 × 1520 resolution.)
Mirror	Yes
Privacy Masking	4 areas

Audio	
Audio Compression	G.711a; G.711Mu; G.726; AAC
Network	
Network	RJ-45 (10/100 Base-T)
Protocol	HTTP; TCP; ARP; RTSP; RTP; UDP; RTCP; SMTP; FTP; DHCP; DNS; DDNS; PPPoE; IPv4/v6; QoS; UPnP; NTP; RTMP; Multicast; HTTPS; SFTP; 802.1x; ICMP; IGMP
Interoperability	ONVIF (Profile S/Profile G); CGI; Milestone; Genetec
User/Host	20
Edge Storage	Dahua Cloud; FTP; Micro SD card (max. 256 GB); NFS
Browser	IE Google Firefox
Management Software	Smart PSS; DSS; DMSS
Mobile Phone	IOS; Android

Certification	
Certifications	CE-LVD: EN60950-1 CE-EMC: Electromagnetic Compatibility Directive 2014/30/EU FCC: 47 CFR FCC Part 15, Subpart B UL: UL60950-1 CAN
Port	
Audio Input	1 (RCA port)
Audio Output	1 (RCA port)
Alarm Input	1 channel In: 5mA 5VDC
Alarm Output	1 channel Out: 300mA 12VDC
Power	
Power Supply	12V DC/POE

Power Consumption	Basic power consumption: 1.9W (12V DC), 2.8W (POE) Max power consumption (H.265, Max resolution, Max stream, WDR, IR full intensity, IVS): 8W (12V DC), 9.6W (POE)
-------------------	---

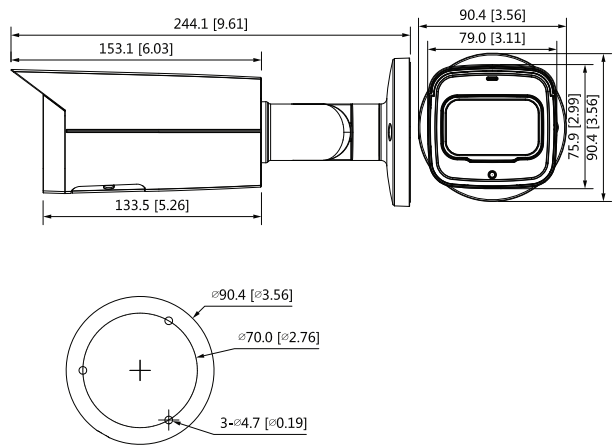
Environment

Operating Temperature	-30°C to +60°C (-22°F to +140°F)
Operating Humidity	≤95%
Storage Temperature	-40°C to +60°C (-40°F to +140°F)
Storage Humidity	≤95%
Protection	IP67

Structure

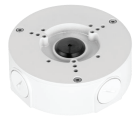
Casing	Metal
Dimensions	Φ244.1 mm × 90.4 mm (Φ9.61" × 3.26")
Net Weight	0.9 kg (1.98 lb)
Gross Weight	1.15 kg (2.54 lb)

Dimensions (mm/inch)



Accessories

Optional:



JBEW-130
Junction Box



LEW-152E
Pole Mount



PW-T1B1D1
12V 1000ma
Power Supply

Pole Mount	Junction Mount
JBEW-130 + LEW-152E	JBEW-130

