

PDE2L2W2

2MP Eco IP Dome Camera



- 1/2.9" 2Megapixel progressive CMOS
- H.264+ & H.264 dual-stream encoding
- DWDR, Day/Night(ICR), 3DNR, AWB, AGC, BLC
- Multiple network monitoring: Web viewer, CMS(DSS/PSS) & DMSS
- 2.8 mm fixed lens
- IP67, PoE



System Overview

This 2MP ONVIF compatible dome camera comes equipped with a 1/2.9 inch progressive scan CMOS sensor and a 2.8mm fixed lens. It is capable of using H.264+ video encoding that compresses the data and decreases bandwidth and storage use up to 70% less than the previous H.264 compression. With Smart IR technology, the built-in LEDs give you "light" up to 98 feet away and adjust automatically to increase or reduce the intensity of the IR (Infrared) based on an object's proximity to the camera.

Functions

True Day/Night

A day/night mechanical IR cut filter makes this camera ideal for applications with fluctuating lighting conditions, delivering color images during the day and automatically switching to monochrome as the scene darkens.

Regions of interest

Regions of Interest (ROI) is a user defined feature that allows the operator to monitor specific areas of a scene while still maintaining overall situational awareness of less important areas.

Smart IR

Smart IR is a technology built into some security cameras that adjusts the intensity of the camera's infrared LEDs to compensate for the distance of an object so that the infrared does not overexpose the object.

Image Flip

When choosing the placement for your camera it's nice to know that no matter where it's placed, a shelf, wall or ceiling you'll have easy access to viewing capabilities. Depending on what camera you are using and where it's being placed you may need to invert the camera video feed to make sure when you view the live feed everything is right side up.

Protection

Supporting $\pm 10\%$ input voltage tolerance, this camera suits even the most unstable conditions for outdoor applications. Its 6KV lightning rating provides protection against the camera and its structure from the effects of lightning.

Interoperability

The camera conforms to the ONVIF (Open Network Video Interface Forum) specifications, ensuring interoperability between network video products regardless of manufacturer.

Smart H.264+

Smart H.264+ technology is a collection of intelligent encoding algorithms based on H.264. To meet the characteristics of video surveillance, Smart H.265+ adopts some key video encoding techniques can be flexibly added/deleted or combined according to different applications and products. Smart H.265+ codec can effectively enhance video encoding efficiency according to the characteristics of different surveillance environments; furthermore, it can greatly reduce transmission bit rate, storage capacity to improve the overall system.

Technical Specification

| | | | | | |
|--------------------------|--------------------------------------|--|--|--|--|
| Camera | | | | | |
| Image Sensor | 1/2.9" 2Megapixel progressive CMOS | | | | |
| Effective Pixels | 1920(H) x1080(V) | | | | |
| RAM/ROM | 256MB/16MB | | | | |
| Scanning System | Progressive | | | | |
| Electronic Shutter Speed | Auto/Manual, 1/3(4)~1/100000s | | | | |
| Minimum Illumination | 0.1Lux/F2.0(Color), 0Lux/F2.0(IR on) | | | | |
| S/N Ratio | More than 50dB | | | | |
| IR Distance | Distance up to 30m(98ft) | | | | |
| IR On/Off Control | Auto/ Manual | | | | |
| IR LEDs | 18 | | | | |

| | | | | | |
|----------------------|-----------------|------------|-----------|-----------|----------|
| Lens | | | | | |
| Lens Type | Fixed | | | | |
| Mount Type | Board-in | | | | |
| Focal Length | 2.8 mm | | | | |
| Max. Aperture | F2.0/F2.0 | | | | |
| Angle of View | H: 110°, V: 57° | | | | |
| Focus Control | Fixed | | | | |
| Close Focus Distance | N/A | | | | |
| | Lens | Detect | Observe | Recognize | Identify |
| DORI Distance | 2.8 mm | 45m(147ft) | 18m(59ft) | 9m(30ft) | 5m(16ft) |

| | | | | | |
|----------------|---|--|--|--|--|
| PTZ | | | | | |
| Pan/Tilt Range | Pan:0° ~360° ;Tilt:0° ~90° ;Rotation:0° ~360° | | | | |

| | | | | | |
|----------------------|--|--|--|--|--|
| Video | | | | | |
| Compression | H.264+/H.264 | | | | |
| Streaming Capability | 2 Streams | | | | |
| Resolution | 1080P(1920x1080)/720P(1280×720)/D1(704×576/704×480)/CIF(352×288/352×240) | | | | |
| Frame Rate | 2M (1 ~ 25/30fps) | | | | |
| | D1/CIF(1 ~ 25/30fps) | | | | |
| Bit Rate Control | CBR/VBR | | | | |
| Bit Rate | H264:24K ~ 8192Kbps | | | | |
| Day/Night | Auto(ICR) / Color / B/W | | | | |
| BLC Mode | BLC / HLC / DWDR | | | | |

| | |
|--------------------|---|
| White Balance | Auto/Natural/Street Lamp/Outdoor/Manual |
| Gain Control | Auto/Manual |
| Noise Reduction | 3D DNR |
| Motion Detetion | Off / On (4 Zone, Rectangle) |
| Region of Interest | Off / On (4 Zone) |
| Electronic Image | Support |
| Smart IR | Support |
| Digital Zoom | 16x |
| Flip | 0°/90°/180°/270° |
| Mirror | Off / On |
| Privacy Masking | Off / On (4 Area, Rectangle) |

| | |
|-------------|-----|
| Audio | |
| Compression | N/A |

| | |
|---------------------|---|
| Network | |
| Ethernet | RJ-45 (10/100Base-T) |
| Protocol | HTTP;HTTPS;TCP;ARP;RTSP;RTP;UDP;SMTP;FTP;DHCP;DNS;DDNS;PPPOE;IPv4/v6;QoS;UPnP;NTP;Bonjour;802.1x;Multicast;ICMP;IGMP; |
| Interoperability | ONVIF, PSIA, CGI |
| Streaming Method | Unicast / Multicast |
| Max. User Access | 10 Users/20 Users |
| Edge Storage | NAS(Network Attached Storage),Local PC for instant recording |
| Web Viewer | IE, Chrome, Firefox, Safari |
| Management Software | Smart PSS, DSS,Easy4ip |
| Smart Phone | iPhone, iPad, Android Phone |

| | |
|----------------|--|
| Certifications | |
| Certifications | CE (EN 60950:2000) UL:UL60950-1 FCC: FCC Part 15 Subpart B |

| | |
|-----------------|-----|
| Interface | |
| Video Interface | N/A |
| Audio Interface | N/A |
| RS485 | N/A |
| Alarm | N/A |

| | |
|-------------------|------------------------------|
| Electrical | |
| Power Supply | DC12V PoE (802.3af)(Class 0) |
| Power Consumption | <5.4W |

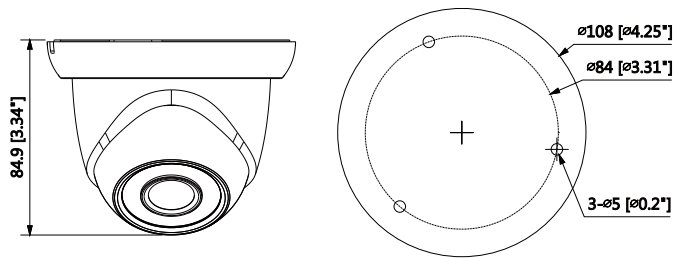
Environmental

| | |
|----------------------|---|
| Operating Conditions | -30° C ~ +60° C (-22° F ~ +140° F) / Less than 95% RH |
| Storage Conditions | -30° C ~ +60° C (-22° F ~ +140° F) / Less than 95% RH |
| Ingress Protection | IP67 |
| Vandal Resistance | N/A |

Construction

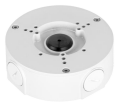
| | |
|--------------|----------------------------|
| Casing | Metal+Plastic |
| Dimensions | Φ108mm×84.9mm(4.25"x3.15") |
| Net Weight | 0.23Kg(0.51lb) |
| Gross Weight | 0.387Kg(0.85lb) |

Dimensions (mm/inch)



Accessories

Optional:



JBEW-130
Junction Box



WEW-204W
Wall Mount



LEW-152
Pole Mount

| Junction Mount | Pole Mount |
|----------------|--------------------|
| JBEW-130 | WEW-204W + LEW-152 |
| | |
| Wall Mount | |
| WEW-204W | |
| | |